

Anti-MRPL21 antibody (131-180) (STJ94218)

STJ94218

GENERAL INFORMATION

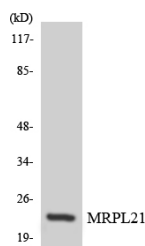
Product Type	Primary antibodies
Short Description	Rabbit polyclonal antibody anti-Large ribosomal subunit protein bL21m (131-180) is suitable for use in Western Blot, Immunohistochemistry, Immunofluorescence and ELISA research applications.
Applications	WB/IHC/IF/ELISA
Host/Source	Rabbit
Reactivity	Human/Mouse

PRODUCT PROPERTIES

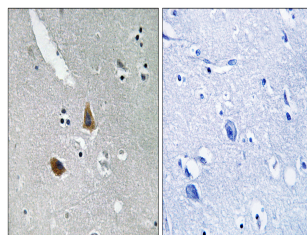
Clonality	Polyclonal
Clone ID	
Concentration	1 mg/mL
Conjugation	Unconjugated
Purification	The antibody was affinity-purified from rabbit antiserum by affinity-chromatography using epitope-specific immunogen.
Dilution Range	WB 1:500-1:2000 IHC 1:100-1:300 ELISA 1:40000 IF 1:50-200
Formulation	Liquid in PBS containing 50% Glycerol, 0.5% BSA and 0.02% Sodium Azide.
Isotype	IgG
Storage Instruction	Store at -20°C for up to 1 year from the date of receipt, and avoid repeat freeze-thaw cycles.

TARGET INFORMATION

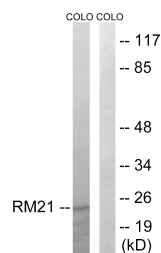
Gene ID	219927
Gene Symbol	MRPL21
Uniprot ID	RM21_HUMAN
Immunogen	The antiserum was produced against synthesized peptide derived from human MRPL21. AA range:131-180
Immunogen Region	131-180
Specificity	MRP-L21 Polyclonal Antibody detects endogenous levels of MRP-L21 protein.
Immunogen Sequence	



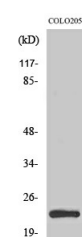
Western blot analysis of the lysates from HeLa cells using MRPL21 antibody.



Immunohistochemistry analysis of paraffin-embedded human brain tissue, using MRPL21 Antibody. The picture on the right is blocked with the synthesized peptide.



Western blot analysis of lysates from COLO cells, using MRPL21 Antibody. The lane on the right is blocked with the synthesized peptide.



Western blot analysis of various cells using MRP-L21 Polyclonal Antibody diluted at 1:1000