

## Anti-MRPL16 antibody (171-220) (STJ94214)

STJ94214

### GENERAL INFORMATION

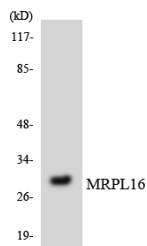
<b>Product Type</b>	Primary antibodies
<b>Short Description</b>	Rabbit polyclonal antibody anti-Large ribosomal subunit protein uL16m (171-220) is suitable for use in Western Blot, Immunohistochemistry, Immunofluorescence and ELISA research applications.
<b>Applications</b>	WB/IHC/IF/ELISA
<b>Host/Source</b>	Rabbit
<b>Reactivity</b>	Human/Rat/Mouse

### PRODUCT PROPERTIES

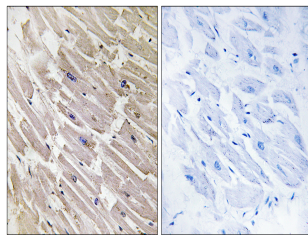
<b>Clonality</b>	Polyclonal
<b>Clone ID</b>	
<b>Concentration</b>	1 mg/mL
<b>Conjugation</b>	Unconjugated
<b>Purification</b>	The antibody was affinity-purified from rabbit antiserum by affinity-chromatography using epitope-specific immunogen.
<b>Dilution Range</b>	WB 1:500-1:2000 IHC 1:100-1:300 ELISA 1:40000 IF 1:50-200
<b>Formulation</b>	Liquid in PBS containing 50% Glycerol, 0.5% BSA and 0.02% Sodium Azide.
<b>Isotype</b>	IgG
<b>Storage Instruction</b>	Store at -20°C for up to 1 year from the date of receipt, and avoid repeat freeze-thaw cycles.

### TARGET INFORMATION

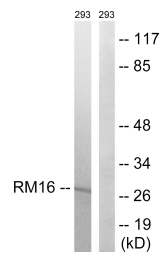
<b>Gene ID</b>	54948
<b>Gene Symbol</b>	MRPL16
<b>Uniprot ID</b>	RM16_HUMAN
<b>Immunogen</b>	The antiserum was produced against synthesized peptide derived from human MRPL16. AA range:171-220
<b>Immunogen Region</b>	171-220
<b>Specificity</b>	MRP-L16 Polyclonal Antibody detects endogenous levels of MRP-L16 protein.
<b>Immunogen Sequence</b>	



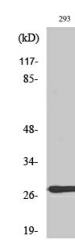
Western blot analysis of the lysates from HeLa cells using MRPL16 antibody.



Immunohistochemistry analysis of paraffin-embedded human heart tissue, using MRPL16 Antibody. The picture on the right is blocked with the synthesized peptide.



Western blot analysis of lysates from 293 cells, using MRPL16 Antibody. The lane on the right is blocked with the synthesized peptide.



Western blot analysis of various cells using MRP-L16 Polyclonal Antibody diluted at 1:1000