

Anti-ABCC2 antibody (991-1040) (STJ94205)

STJ94205

GENERAL INFORMATION

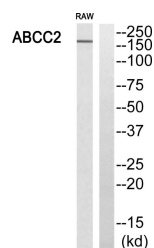
Product Type	Primary antibodies
Short Description	Rabbit polyclonal antibody anti-ATP-binding cassette sub-family C member 2 (991-1040) is suitable for use in Western Blot and ELISA research applications.
Applications	WB/ELISA
Host/Source	Rabbit
Reactivity	Human/Rat/Mouse

PRODUCT PROPERTIES

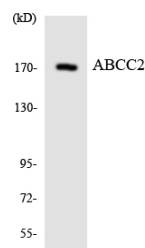
Clonality	Polyclonal
Clone ID	
Concentration	1 mg/mL
Conjugation	Unconjugated
Purification	The antibody was affinity-purified from rabbit antiserum by affinity-chromatography using epitope-specific immunogen.
Dilution Range	WB 1:500-1:2000 ELISA 1:10000
Formulation	Liquid in PBS containing 50% Glycerol, 0.5% BSA and 0.02% Sodium Azide.
Isotype	IgG
Storage	Store at -20°C for up to 1 year from the date of receipt, and avoid repeat freeze-thaw cycles.
Instruction	

TARGET INFORMATION

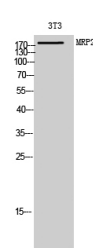
Gene ID	1244
Gene Symbol	ABCC2
Uniprot ID	MRP2_HUMAN
Immunogen	The antiserum was produced against synthesized peptide derived from human ABCC2. AA range:991-1040
Immunogen Region	991-1040
Specificity	MRP2 Polyclonal Antibody detects endogenous levels of MRP2 protein.
Immunogen Sequence	



Western blot analysis of ABCC2 Antibody. The lane on the right is blocked with the ABCC2 peptide.



Western blot analysis of the lysates from HeLa cells using ABCC2 antibody.



Western blot analysis of 3T3 cells using MRP2 Polyclonal Antibody diluted at 1/1000.

This product is suitable for in-vitro studies under the RESEARCH USE ONLY [RUO] licence. This product must not be used as for diagnostic or other medical purposes.
St John's Laboratory Ltd, Knowledge Dock Business Centre, University Way, London, E16 2RD | Tel: 0208 223 3081