

## Anti-MRGPRX3 antibody (99-148) (STJ94201)

STJ94201

### GENERAL INFORMATION

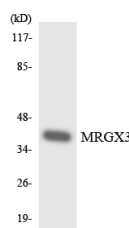
<b>Product Type</b>	Primary antibodies
<b>Short Description</b>	Rabbit polyclonal antibody anti-Mas-related G-protein coupled receptor member X3 (99-148) is suitable for use in Western Blot, ELISA and Immunohistochemistry research applications.
<b>Applications</b>	WB/ELISA/IHC
<b>Host/Source</b>	Rabbit
<b>Reactivity</b>	Human/Rat/Mouse

### PRODUCT PROPERTIES

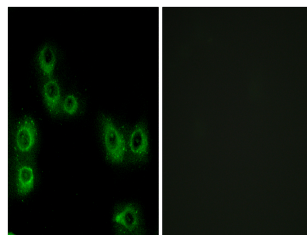
<b>Clonality</b>	Polyclonal
<b>Clone ID</b>	
<b>Concentration</b>	1 mg/mL
<b>Conjugation</b>	Unconjugated
<b>Purification</b>	The antibody was affinity-purified from rabbit antiserum by affinity-chromatography using epitope-specific immunogen.
<b>Dilution Range</b>	WB 1:500-2000 IHC-p 1:50-300 ELISA 2000-20000
<b>Formulation</b>	Liquid in PBS containing 50% Glycerol, 0.5% BSA and 0.02% Sodium Azide.
<b>Isotype</b>	IgG
<b>Storage Instruction</b>	Store at -20°C for up to 1 year from the date of receipt, and avoid repeat freeze-thaw cycles.

### TARGET INFORMATION

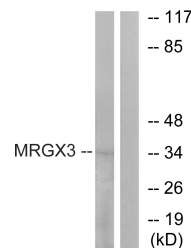
<b>Gene ID</b>	117195
<b>Gene Symbol</b>	MRGPRX3
<b>Uniprot ID</b>	MRGX3_HUMAN
<b>Immunogen</b>	The antiserum was produced against synthesized peptide derived from human MRGX3. AA range:99-148
<b>Immunogen Region</b>	99-148
<b>Specificity</b>	MRGX3 Polyclonal Antibody detects endogenous levels of MRGX3 protein.
<b>Immunogen Sequence</b>	



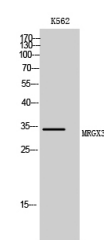
Western blot analysis of the lysates from 293 cells using MRGX3 antibody.



Immunofluorescence analysis of MCF7 cells, using MRGX3 Antibody. The picture on the right is blocked with the synthesized peptide.



Western blot analysis of lysates from K562 cells, using MRGX3 Antibody. The lane on the right is blocked with the synthesized peptide.



Western blot analysis of K562 cells using MRGX3 Polyclonal Antibody