

Anti-MRGRG antibody (231-280) (STJ94199)

STJ94199

GENERAL INFORMATION

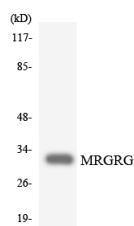
Product Type	Primary antibodies
Short Description	Rabbit polyclonal antibody anti-Mas-related G-protein coupled receptor member G (231-280) is suitable for use in Western Blot, ELISA and Immunohistochemistry research applications.
Applications	WB/ELISA/IHC
Host/Source	Rabbit
Reactivity	Human/Rat/Mouse

PRODUCT PROPERTIES

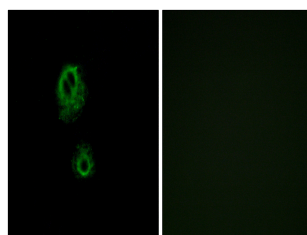
Clonality	Polyclonal
Clone ID	
Concentration	1 mg/mL
Conjugation	Unconjugated
Purification	The antibody was affinity-purified from rabbit antiserum by affinity-chromatography using epitope-specific immunogen.
Dilution Range	WB 1:500-2000 IHC-p 1:50-300 ELISA 2000-20000
Formulation	Liquid in PBS containing 50% Glycerol, 0.5% BSA and 0.02% Sodium Azide.
Isotype	IgG
Storage Instruction	Store at -20°C for up to 1 year from the date of receipt, and avoid repeat freeze-thaw cycles.

TARGET INFORMATION

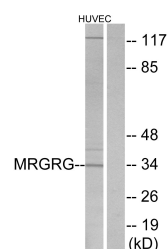
Gene ID	386746
Gene Symbol	MRGRG
Uniprot ID	MRGRG_HUMAN
Immunogen	The antiserum was produced against synthesized peptide derived from human MRGRG. AA range:231-280
Immunogen Region	231-280
Specificity	MRGG Polyclonal Antibody detects endogenous levels of MRGG protein.
Immunogen Sequence	



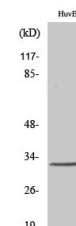
Western blot analysis of the lysates from HepG2 cells using MRGRG antibody.



Immunofluorescence analysis of A549 cells, using MRGRG Antibody. The picture on the right is blocked with the synthesized peptide.



Western blot analysis of lysates from HUVEC cells, using MRGRG Antibody. The lane on the right is blocked with the synthesized peptide.



Western blot analysis of various cells using MRGRG Polyclonal Antibody