

Anti-KIF20B antibody (1771-1820) (STJ94188)

STJ94188

GENERAL INFORMATION

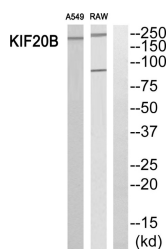
Product Type	Primary antibodies
Short Description	Rabbit polyclonal antibody anti-Kinesin-like protein KIF20B (1771-1820) is suitable for use in Immunofluorescence, ELISA and Immunohistochemistry research applications.
Applications	IF/ELISA/IHC
Host/Source	Rabbit
Reactivity	Human/Rat/Mouse

PRODUCT PROPERTIES

Clonality	Polyclonal
Clone ID	
Concentration	1 mg/mL
Conjugation	Unconjugated
Purification	The antibody was affinity-purified from rabbit antiserum by affinity-chromatography using epitope-specific immunogen.
Dilution Range	IF ICC 1:50-300 ELISA 1:2000-20000 IHC-p 1:50-200
Formulation	Liquid in PBS containing 50% Glycerol, 0.5% BSA and 0.02% Sodium Azide.
Isotype	IgG
Storage Instruction	Store at -20°C for up to 1 year from the date of receipt, and avoid repeat freeze-thaw cycles.

TARGET INFORMATION

Gene ID	9585
Gene Symbol	KIF20B
Uniprot ID	KI20B_HUMAN
Immunogen	The antiserum was produced against synthesized peptide derived from human KIF20B. AA range:1771-1820
Immunogen Region	1771-1820
Specificity	MPP1 Polyclonal Antibody detects endogenous levels of MPP1 protein.
Immunogen Sequence	



Western blot analysis of KIF20B Antibody. The lane on the right is blocked with the KIF20B peptide.

This product is suitable for in-vitro studies under the RESEARCH USE ONLY [RUO] licence. This product must not be used as for diagnostic or other medical purposes.
St John's Laboratory Ltd, Knowledge Dock Business Centre, University Way, London, E16 2RD | Tel: 0208 223 3081