

## Anti-MOV10L1 antibody (318-367) (STJ94184)

STJ94184

### GENERAL INFORMATION

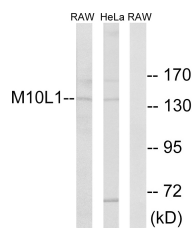
|                          |   |
|--------------------------|---|
| <b>Product Type</b>      | Primary antibodies  |
| <b>Short Description</b> | Rabbit polyclonal antibody anti-RNA helicase Mov10l1 (318-367) is suitable for use in Western Blot, Immunohistochemistry, Immunofluorescence and ELISA research applications. |
| <b>Applications</b>      | WB/IHC/IF/ELISA   |
| <b>Host/Source</b>       | Rabbit  |
| <b>Reactivity</b>        | Human/Rat/Mouse   |

### PRODUCT PROPERTIES

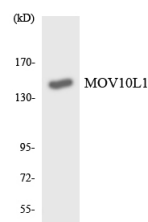
|                            |   |
|----------------------------|---|
| <b>Clonality</b>           | Polyclonal  |
| <b>Clone ID</b>            |   |
| <b>Concentration</b>       | 1 mg/mL   |
| <b>Conjugation</b>         | Unconjugated  |
| <b>Purification</b>        | The antibody was affinity-purified from rabbit antiserum by affinity-chromatography using epitope-specific immunogen. |
| <b>Dilution Range</b>      | WB 1:500-1:2000<br>IHC 1:100-1:300<br>ELISA 1:5000<br>IF 1:50-200   |
| <b>Formulation</b>         | Liquid in PBS containing 50% Glycerol, 0.5% BSA and 0.02% Sodium Azide.   |
| <b>Isotype</b>             | IgG   |
| <b>Storage Instruction</b> | Store at -20°C for up to 1 year from the date of receipt, and avoid repeat freeze-thaw cycles.                        |

### TARGET INFORMATION

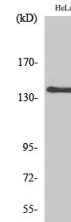
|                           |   |
|---------------------------|---|
| <b>Gene ID</b>            | 54456   |
| <b>Gene Symbol</b>        | MOV10L1   |
| <b>Uniprot ID</b>         | M10L1_HUMAN   |
| <b>Immunogen</b>          | The antiserum was produced against synthesized peptide derived from human MOV10L1. AA range:318-367 |
| <b>Immunogen Region</b>   | 318-367   |
| <b>Specificity</b>        | MOV10L1 Polyclonal Antibody detects endogenous levels of MOV10L1 protein.                           |
| <b>Immunogen Sequence</b> |   |



Western blot analysis of lysates from HeLa and RAW264.7 cells, using MOV10L1 Antibody. The lane on the right is blocked with the synthesized peptide.



Western blot analysis of the lysates from HT-29 cells using MOV10L1 antibody.



Western blot analysis of various cells using MOV10L1 Polyclonal Antibody diluted at 1/4 500