

Anti-MOB3C antibody (81-130) (STJ94177)

STJ94177

GENERAL INFORMATION

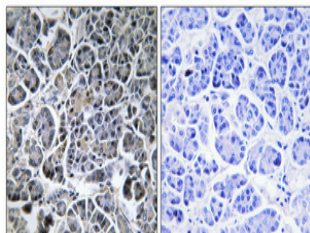
Product Type	Primary antibodies
Short Description	Rabbit polyclonal antibody anti-MOB kinase activator 3C (81-130) is suitable for use in Western Blot, Immunohistochemistry, Immunofluorescence and ELISA research applications.
Applications	WB/IHC/IF/ELISA
Host/Source	Rabbit
Reactivity	Human/Mouse

PRODUCT PROPERTIES

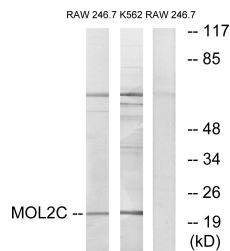
Clonality	Polyclonal
Clone ID	
Concentration	1 mg/mL
Conjugation	Unconjugated
Purification	The antibody was affinity-purified from rabbit antiserum by affinity-chromatography using epitope-specific immunogen.
Dilution Range	WB 1:500-1:2000 IHC 1:100-1:300 ELISA 1:40000 IF 1:50-200
Formulation	Liquid in PBS containing 50% Glycerol, 0.5% BSA and 0.02% Sodium Azide.
Isotype	IgG
Storage Instruction	Store at -20°C for up to 1 year from the date of receipt, and avoid repeat freeze-thaw cycles.

TARGET INFORMATION

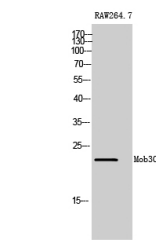
Gene ID	148932
Gene Symbol	MOB3C
Uniprot ID	MOB3C_HUMAN
Immunogen	The antiserum was produced against synthesized peptide derived from human MOL2C. AA range:81-130
Immunogen Region	81-130
Specificity	Mob3C Polyclonal Antibody detects endogenous levels of Mob3C protein.
Immunogen Sequence	



Immunohistochemical analysis of paraffin-embedded Human pancreas. Antibody was diluted at 1:100 (4A°C overnight). High-pressure and temperature Tris-EDTA, pH8.0 was used for antigen retrieval. Negative control (right) obtained from antibody was pre-absorbed by immunogen peptide.



Western blot analysis of lysates from RAW264.7 and K562 cells, using MOL2C Antibody. The lane on the right is blocked with the synthesized peptide.



Western blot analysis of RAW264.7 cells using Mob3C Polyclonal Antibody

This product is suitable for in-vitro studies under the RESEARCH USE ONLY [RUO] licence. This product must not be used as for diagnostic or other medical purposes.
St John's Laboratory Ltd, Knowledge Dock Business Centre, University Way, London, E16 2RD | Tel: 0208 223 3081