

Anti-MMP10 antibody (361-410) (STJ94158)

STJ94158

GENERAL INFORMATION

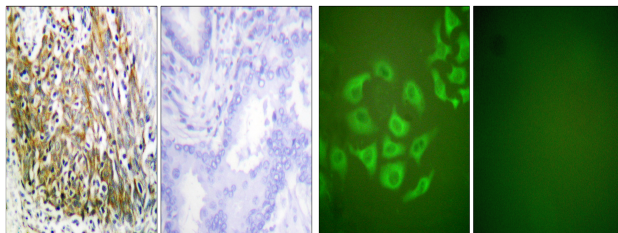
Product Type	Primary antibodies
Short Description	Rabbit polyclonal antibody anti-Stromelysin-2 (361-410) is suitable for use in Immunohistochemistry, Immunofluorescence, Western Blot and ELISA research applications.
Applications	IHC/IF/WB/ELISA
Host/Source	Rabbit
Reactivity	Human/Mouse/Rat

PRODUCT PROPERTIES

Clonality	Polyclonal
Clone ID	
Concentration	1 mg/mL
Conjugation	Unconjugated
Purification	The antibody was affinity-purified from rabbit antiserum by affinity-chromatography using epitope-specific immunogen.
Dilution Range	WB 1:500-2000 IHC 1:100-1:300 IF 1:200-1:1000 ELISA 1:40000
Formulation	Liquid in PBS containing 50% Glycerol, 0.5% BSA and 0.02% Sodium Azide.
Isotype	IgG
Storage Instruction	Store at -20°C for up to 1 year from the date of receipt, and avoid repeat freeze-thaw cycles.

TARGET INFORMATION

Gene ID	4319
Gene Symbol	MMP10
Uniprot ID	MMP10_HUMAN
Immunogen	The antiserum was produced against synthesized peptide derived from human MMP-10. AA range:361-410
Immunogen Region	361-410
Specificity	MMP-10 Polyclonal Antibody detects endogenous levels of MMP-10 protein.
Immunogen Sequence	



Immunohistochemistry analysis of paraffin-embedded human lung carcinoma tissue, using MMP-10 Antibody. The picture on the right is blocked with the synthesized peptide.

Immunofluorescence analysis of HepG2 cells, using MMP-10 Antibody. The picture on the right is blocked with the synthesized peptide.

This product is suitable for in-vitro studies under the RESEARCH USE ONLY [RUO] licence. This product must not be used as for diagnostic or other medical purposes.
St John's Laboratory Ltd, Knowledge Dock Business Centre, University Way, London, E16 2RD | Tel: 0208 223 3081