

Anti-MAP3K20 antibody (701-750) (STJ94155)

STJ94155

GENERAL INFORMATION

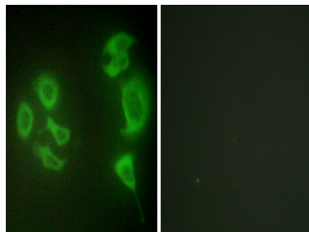
Product Type	Primary antibodies
Short Description	Rabbit polyclonal antibody anti-Mitogen-activated protein kinase kinase kinase 20 (701-750) is suitable for use in Western Blot and Immunohistochemistry research applications.
Applications	WB/IHC
Host/Source	Rabbit
Reactivity	Human/Mouse

PRODUCT PROPERTIES

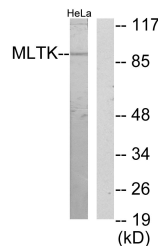
Clonality	Polyclonal
Clone ID	
Concentration	1 mg/mL
Conjugation	Unconjugated
Purification	The antibody was affinity-purified from rabbit antiserum by affinity-chromatography using epitope-specific immunogen.
Dilution Range	WB 1:500-2000 IHC-p 1:50-300
Formulation	Liquid in PBS containing 50% Glycerol, 0.5% BSA and 0.02% Sodium Azide.
Isotype	IgG
Storage	Store at -20°C for up to 1 year from the date of receipt, and avoid repeat freeze-thaw cycles.
Instruction	

TARGET INFORMATION

Gene ID	51776
Gene Symbol	MAP3K20
Uniprot ID	M3K20_HUMAN
Immunogen	The antiserum was produced against synthesized peptide derived from human MLTK. AA range:701-750
Immunogen Region	701-750
Specificity	MLTK Polyclonal Antibody detects endogenous levels of MLTK protein.
Immunogen Sequence	



Immunofluorescence analysis of HepG2 cells, using MLTK Antibody. The picture on the right is blocked with the synthesized peptide.



Western blot analysis of lysates from HeLa cells, using MLTK Antibody. The lane on the right is blocked with the synthesized peptide.



Western blot analysis of various cells using MLTK Polyclonal Antibody diluted at 1:1000