

Anti-DUSP16 antibody (571-620) (STJ94142)

STJ94142

GENERAL INFORMATION

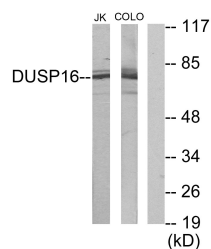
Product Type	Primary antibodies
Short Description	Rabbit polyclonal antibody anti-Dual specificity protein phosphatase 16 (571-620) is suitable for use in Western Blot, Immunohistochemistry, Immunofluorescence and ELISA research applications.
Applications	WB/IHC/IF/ELISA
Host/Source	Rabbit
Reactivity	Human/Mouse

PRODUCT PROPERTIES

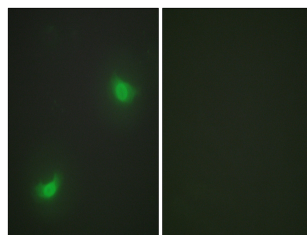
Clonality	Polyclonal
Clone ID	
Concentration	1 mg/mL
Conjugation	Unconjugated
Purification	The antibody was affinity-purified from rabbit antiserum by affinity-chromatography using epitope-specific immunogen.
Dilution Range	WB 1:500-1:2000 IHC 1:100-1:300 IF 1:200-1:1000 ELISA 1:10000
Formulation	Liquid in PBS containing 50% Glycerol, 0.5% BSA and 0.02% Sodium Azide.
Isotype	IgG
Storage Instruction	Store at -20°C for up to 1 year from the date of receipt, and avoid repeat freeze-thaw cycles.

TARGET INFORMATION

Gene ID	80824
Gene Symbol	DUSP16
Uniprot ID	DUS16_HUMAN
Immunogen	The antiserum was produced against synthesized peptide derived from human DUSP16. AA range:571-620
Immunogen Region	571-620
Specificity	MKP-7 Polyclonal Antibody detects endogenous levels of MKP-7 protein.
Immunogen Sequence	



Western blot analysis of lysates from Jurkat and COLO205 cells, using DUSP16 Antibody. The lane on the right is blocked with the synthesized peptide.



Immunofluorescence analysis of HepG2 cells, using DUSP16 Antibody. The picture on the right is blocked with the synthesized peptide.