

## Anti-DUSP4 antibody (81-130) (STJ94138)

STJ94138

### GENERAL INFORMATION

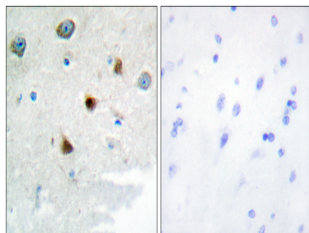
<b>Product Type</b>	Primary antibodies
<b>Short Description</b>	Rabbit polyclonal antibody anti-Dual specificity protein phosphatase 4 (81-130) is suitable for use in Western Blot, Immunohistochemistry, Immunofluorescence and ELISA research applications.
<b>Applications</b>	WB/IHC/IF/ELISA
<b>Host/Source</b>	Rabbit
<b>Reactivity</b>	Human/Mouse/Rat/Monkey

### PRODUCT PROPERTIES

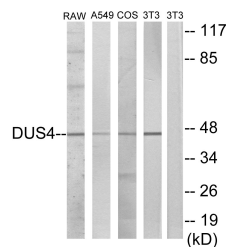
<b>Clonality</b>	Polyclonal
<b>Clone ID</b>	
<b>Concentration</b>	1 mg/mL
<b>Conjugation</b>	Unconjugated
<b>Purification</b>	The antibody was affinity-purified from rabbit antiserum by affinity-chromatography using epitope-specific immunogen.
<b>Dilution Range</b>	WB 1:500-1:2000 IHC 1:100-1:300 ELISA 1:20000 IF 1:50-200
<b>Formulation</b>	Liquid in PBS containing 50% Glycerol, 0.5% BSA and 0.02% Sodium Azide.
<b>Isotype</b>	IgG
<b>Storage</b>	Store at -20°C for up to 1 year from the date of receipt, and avoid repeat freeze-thaw cycles.
<b>Instruction</b>	

### TARGET INFORMATION

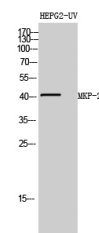
<b>Gene ID</b>	1846
<b>Gene Symbol</b>	DUSP4
<b>Uniprot ID</b>	DUS4_HUMAN
<b>Immunogen</b>	The antiserum was produced against synthesized peptide derived from human DUSP4. AA range:81-130
<b>Immunogen</b>	81-130
<b>Region</b>	
<b>Specificity</b>	MKP-2 Polyclonal Antibody detects endogenous levels of MKP-2 protein.
<b>Immunogen</b>	
<b>Sequence</b>	



Immunohistochemistry analysis of paraffin-embedded human brain tissue, using DUSP4 Antibody. The picture on the right is blocked with the synthesized peptide.



Western blot analysis of lysates from RAW264.7, A549, COS7, and NIH/3T3 cells, using DUSP4 Antibody. The lane on the right is blocked with the synthesized peptide.



Western blot analysis of HEPG2-UV cells using MKP-2 Polyclonal Antibody diluted at 1:1000 cells nucleus extracted by Minute TM Cytoplasmic and Nuclear Fractionation kit (SC-003, Inventibiotec, MN, USA).

This product is suitable for in-vitro studies under the RESEARCH USE ONLY [RUO] licence. This product must not be used as for diagnostic or other medical purposes.  
St John's Laboratory Ltd, Knowledge Dock Business Centre, University Way, London, E16 2RD | Tel: 0208 223 3081