

Anti-MINPP1 antibody (328-377 aa) (STJ94132)

STJ94132

GENERAL INFORMATION

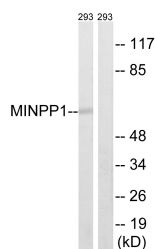
Product Type	Primary antibodies
Short Description	Rabbit polyclonal antibody anti-Multiple inositol polyphosphate phosphatase 1-tetrakisphosphate 3-phosphataseP4 3-phosphatase (328-377 aa) is suitable for use in Western Blot, Immunohistochemistry, Immunofluorescence and ELISA research applications.
Applications	WB/IHC/IF/ELISA
Host/Source	Rabbit
Reactivity	Human/Mouse/Rat

PRODUCT PROPERTIES

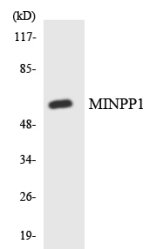
Clonality	Polyclonal
Clone ID	
Concentration	1 mg/mL
Conjugation	Unconjugated
Purification	The antibody was affinity-purified from rabbit antiserum by affinity-chromatography using epitope-specific immunogen.
Dilution	WB 1:500-1:2000
Range	IHC 1:100-1:300 ELISA 1:10000 IF 1:50-200
Formulation	Liquid in PBS containing 50% Glycerol, 0.5% BSA and 0.02% Sodium Azide.
Isotype	IgG
Storage Instruction	Store at -20°C for up to 1 year from the date of receipt, and avoid repeat freeze-thaw cycles.

TARGET INFORMATION

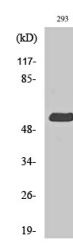
Gene ID	9562
Gene Symbol	MINPP1
Uniprot ID	MINP1_HUMAN
Immunogen	The antiserum was produced against synthesized peptide derived from the human MINPP1 at the amino acid range 328-377
Immunogen Region	328-377 aa
Specificity	MIPP Polyclonal Antibody detects endogenous levels of MIPP protein.
Immunogen Sequence	



Western blot analysis of lysates from 293 cells, using MINPP1 Antibody. The lane on the right is blocked with the synthesized peptide.



Western blot analysis of the lysates from HepG2 cells using MINPP1 antibody.



Western blot analysis of various cells using MIPP Polyclonal Antibody.

This product is suitable for in-vitro studies under the RESEARCH USE ONLY [RUO] licence. This product must not be used as for diagnostic or other medical purposes.
St John's Laboratory Ltd, Knowledge Dock Business Centre, University Way, London, E16 2RD | Tel: 0208 223 3081