

Anti-MGST3 antibody (8-57 aa) (STJ94118)

STJ94118

GENERAL INFORMATION

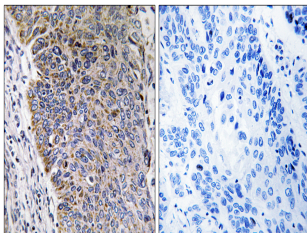
| | |
|--------------------------|---|
| Product Type | Primary antibodies |
| Short Description | Rabbit polyclonal antibody anti-Glutathione S-transferase 3, mitochondrial (8-57 aa) is suitable for use in Immunohistochemistry, Immunofluorescence and ELISA research applications. |
| Applications | IHC/IF/ELISA |
| Host/Source | Rabbit |
| Reactivity | Human/Mouse |

PRODUCT PROPERTIES

| | |
|----------------------------|---|
| Clonality | Polyclonal |
| Clone ID | |
| Concentration | 1 mg/mL |
| Conjugation | Unconjugated |
| Purification | The antibody was affinity-purified from rabbit antiserum by affinity-chromatography using epitope-specific immunogen. |
| Dilution Range | IHC 1:100-1:300 ELISA 1:10000 IF 1:50-200 |
| Formulation | Liquid in PBS containing 50% Glycerol, 0.5% BSA and 0.02% Sodium Azide. |
| Isotype | IgG |
| Storage Instruction | Store at -20°C for up to 1 year from the date of receipt, and avoid repeat freeze-thaw cycles. |

TARGET INFORMATION

| | |
|---------------------------|--|
| Gene ID | 4259 |
| Gene Symbol | MGST3 |
| Uniprot ID | MGST3_HUMAN |
| Immunogen | The antiserum was produced against synthesized peptide derived from the human MGST3 at the amino acid range 8-57 |
| Immunogen Region | 8-57 aa |
| Specificity | MGST3 Polyclonal Antibody detects endogenous levels of MGST3 protein. |
| Immunogen Sequence | |



Immunohistochemistry analysis of paraffin-embedded human lung carcinoma tissue, using MGST3 Antibody. The picture on the right is blocked with the synthesized peptide.