

Anti-MEF2A antibody (374-423 aa) (STJ94064)

STJ94064

GENERAL INFORMATION

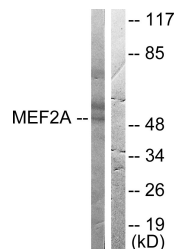
Product Type	Primary antibodies
Short Description	Rabbit polyclonal antibody anti-Myocyte-specific enhancer factor 2A (374-423 aa) is suitable for use in Western Blot, Immunohistochemistry, Immunofluorescence and ELISA research applications.
Applications	WB/IHC/IF/ELISA
Host/Source	Rabbit
Reactivity	Human/Mouse/Rat

PRODUCT PROPERTIES

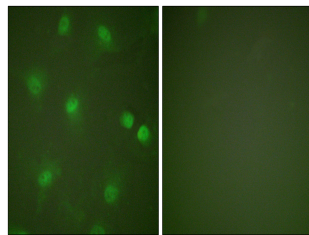
Clonality	Polyclonal
Clone ID	
Concentration	1 mg/mL
Conjugation	Unconjugated
Purification	The antibody was affinity-purified from rabbit antiserum by affinity-chromatography using epitope-specific immunogen.
Dilution	WB 1:500-1:2000
Range	IHC 1:100-1:300 IF 1:200-1:1000 ELISA 1:40000
Formulation	Liquid in PBS containing 50% Glycerol, 0.5% BSA and 0.02% Sodium Azide.
Isotype	IgG
Storage	Store at -20°C for up to 1 year from the date of receipt, and avoid repeat freeze-thaw cycles.
Instruction	

TARGET INFORMATION

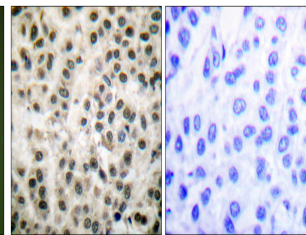
Gene ID	4205
Gene Symbol	MEF2A
Uniprot ID	MEF2A_HUMAN
Immunogen	The antiserum was produced against synthesized peptide derived from the human MEF2A at the amino acid range 374-423
Immunogen	374-423 aa
Region	
Specificity	MEF-2 Polyclonal Antibody detects endogenous levels of MEF-2 protein.
Immunogen	
Sequence	



Western blot analysis of lysates from HeLa cells, treated with PMA 125ng/ml 30', using MEF2A Antibody. The lane on the right is blocked with the synthesized peptide.



Immunofluorescence analysis of HeLa cells, using MEF2A Antibody. The picture on the right is blocked with the synthesized peptide.



Immunohistochemistry analysis of paraffin-embedded human breast carcinoma tissue, using MEF2A Antibody. The picture on the right is blocked with the synthesized peptide.



Western blot analysis of various cells using MEF-2 Polyclonal Antibody diluted at 10⁴/1000 cells nucleus extracted by Minute TM Cytoplasmic and Nuclear Fractionation kit (SC-003, Inventiotech, MN, USA).

This product is suitable for in-vitro studies under the RESEARCH USE ONLY [RUO] licence. This product must not be used as for diagnostic or other medical purposes.
St John's Laboratory Ltd, Knowledge Dock Business Centre, University Way, London, E16 2RD | Tel: 0208 223 3081