

Anti-MDM4 antibody (336-385 aa) (STJ94058)

STJ94058

GENERAL INFORMATION

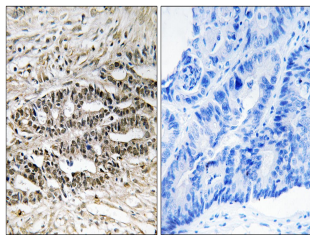
Product Type	Primary antibodies
Short Description	Rabbit polyclonal antibody anti-Protein Mdm4 (336-385 aa) is suitable for use in Western Blot, Immunohistochemistry, Immunofluorescence and ELISA research applications.
Applications	WB/IHC/IF/ELISA
Host/Source	Rabbit
Reactivity	Human/Mouse/Rat

PRODUCT PROPERTIES

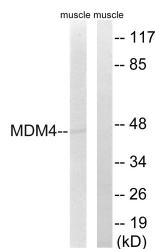
Clonality	Polyclonal
Clone ID	
Concentration	1 mg/mL
Conjugation	Unconjugated
Purification	The antibody was affinity-purified from rabbit antiserum by affinity-chromatography using epitope-specific immunogen.
Dilution Range	WB 1:500-1:2000 IHC 1:100-1:300 ELISA 1:40000 IF 1:50-200
Formulation	Liquid in PBS containing 50% Glycerol, 0.5% BSA and 0.02% Sodium Azide.
Isotype	IgG
Storage	Store at -20°C for up to 1 year from the date of receipt, and avoid repeat freeze-thaw cycles.
Instruction	

TARGET INFORMATION

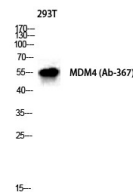
Gene ID	4194
Gene Symbol	MDM4
Uniprot ID	MDM4_HUMAN
Immunogen	The antiserum was produced against synthesized peptide derived from the human MDM4 at the amino acid range 336-385
Immunogen	336-385 aa
Region	
Specificity	MDMX Polyclonal Antibody detects endogenous levels of MDMX protein.
Immunogen Sequence	



Immunohistochemistry analysis of paraffin-embedded human colon carcinoma tissue, using MDM4 Antibody. The picture on the right is blocked with the synthesized peptide.



Western blot analysis of lysates from rat muscle cells, using MDM4 Antibody. The lane on the right is blocked with the synthesized peptide.



Western blot analysis of 293T cells using MDMX Polyclonal Antibody diluted at 1:1000 cells nucleus extracted by Minute TM Cytoplasmic and Nuclear Fractionation kit (SC-003, Inventiotech, MN, USA).