

Anti-MDM2 antibody (391-440 aa) (STJ94055)

STJ94055

GENERAL INFORMATION

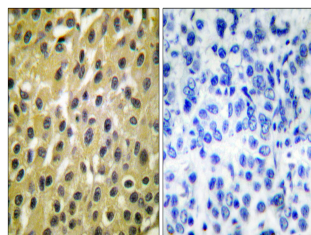
Product Type	Primary antibodies
Short Description	Rabbit polyclonal antibody anti-E3 ubiquitin-protein ligase Mdm2 (391-440 aa) is suitable for use in Western Blot, Immunohistochemistry, Immunofluorescence and ELISA research applications.
Applications	WB/IHC/IF/ELISA
Host/Source	Rabbit
Reactivity	Human/Mouse

PRODUCT PROPERTIES

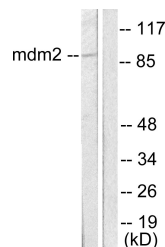
Clonality	Polyclonal
Clone ID	
Concentration	1 mg/mL
Conjugation	Unconjugated
Purification	The antibody was affinity-purified from rabbit antiserum by affinity-chromatography using epitope-specific immunogen.
Dilution Range	WB 1:500-1:2000 IHC 1:100-1:300 IF 1:200-1:1000 ELISA 1:40000
Formulation	Liquid in PBS containing 50% Glycerol, 0.5% BSA and 0.02% Sodium Azide.
Isotype	IgG
Storage	Store at -20°C for up to 1 year from the date of receipt, and avoid repeat freeze-thaw cycles.
Instruction	

TARGET INFORMATION

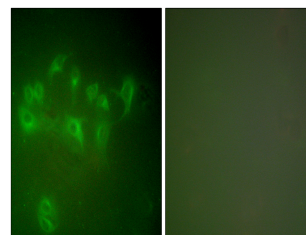
Gene ID	4193
Gene Symbol	MDM2
Uniprot ID	MDM2_HUMAN
Immunogen	The antiserum was produced against synthesized peptide derived from the human MDM2 at the amino acid range 391-440
Immunogen	391-440 aa
Region	
Specificity	Mdm2 Polyclonal Antibody detects endogenous levels of Mdm2 protein.
Immunogen	
Sequence	



Immunohistochemistry analysis of paraffin-embedded human breast carcinoma tissue, using MDM2 Antibody. The picture on the right is blocked with the synthesized peptide.



Western blot analysis of lysates from SKOV3 cells, using MDM2 Antibody. The lane on the right is blocked with the synthesized peptide.



Immunofluorescence analysis of A549 cells, using MDM2 Antibody. The picture on the right is blocked with the synthesized peptide.

This product is suitable for in-vitro studies under the RESEARCH USE ONLY [RUO] licence. This product must not be used as for diagnostic or other medical purposes.
St John's Laboratory Ltd, Knowledge Dock Business Centre, University Way, London, E16 2RD | Tel: 0208 223 3081