

Anti-MCL1 antibody (91-140 aa) (STJ94044)

STJ94044

GENERAL INFORMATION

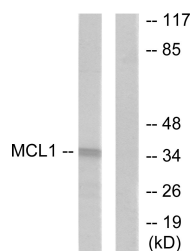
Product Type	Primary antibodies
Short Description	Rabbit polyclonal antibody anti-Induced myeloid leukemia cell differentiation protein Mcl-1 (91-140 aa) is suitable for use in Western Blot, Immunohistochemistry, Immunofluorescence and ELISA research applications.
Applications	WB/IHC/IF/ELISA
Host/Source	Rabbit
Reactivity	Human/Mouse/Rat

PRODUCT PROPERTIES

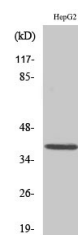
Clonality	Polyclonal
Clone ID	
Concentration	1 mg/mL
Conjugation	Unconjugated
Purification	The antibody was affinity-purified from rabbit antiserum by affinity-chromatography using epitope-specific immunogen.
Dilution	WB 1:500-1:2000
Range	IHC 1:100-1:300 ELISA 1:40000 IF 1:50-200
Formulation	Liquid in PBS containing 50% Glycerol, 0.5% BSA and 0.02% Sodium Azide.
Isotype	IgG
Storage	Store at -20°C for up to 1 year from the date of receipt, and avoid repeat freeze-thaw cycles.
Instruction	

TARGET INFORMATION

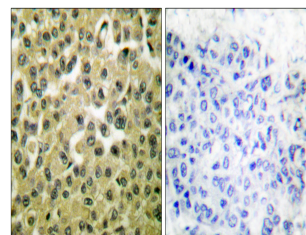
Gene ID	4170
Gene Symbol	MCL1
Uniprot ID	MCL1_HUMAN
Immunogen	The antiserum was produced against synthesized peptide derived from the human MCL1 at the amino acid range 91-140
Immunogen Region	91-140 aa
Specificity	Mcl-1 Polyclonal Antibody detects endogenous levels of Mcl-1 protein.
Immunogen Sequence	



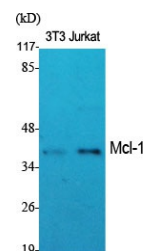
Western blot analysis of lysates from HUVEC cells, using MCL1 Antibody. The lane on the right is blocked with the synthesized peptide.



Western blot analysis of Jurkat cells using Mcl-1 Polyclonal Antibody diluted at 1:1000



Immunohistochemistry analysis of paraffin-embedded human breast carcinoma tissue, using MCL1 Antibody. The picture on the right is blocked with the synthesized peptide.



Western blot analysis of various cells using Mcl-1 Polyclonal Antibody diluted at 1:1000

This product is suitable for in-vitro studies under the RESEARCH USE ONLY [RUO] licence. This product must not be used as for diagnostic or other medical purposes.
St John's Laboratory Ltd, Knowledge Dock Business Centre, University Way, London, E16 2RD | Tel: 0208 223 3081