

Anti-MC2R antibody (248-297 aa) (STJ94039)

STJ94039

GENERAL INFORMATION

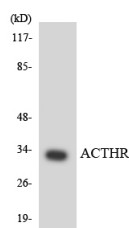
Product Type	Primary antibodies
Short Description	Rabbit polyclonal antibody anti-Adrenocorticotrophic hormone receptor (248-297 aa) is suitable for use in Western Blot, ELISA and Immunohistochemistry research applications.
Applications	WB/ELISA/IHC
Host/Source	Rabbit
Reactivity	Human/Mouse

PRODUCT PROPERTIES

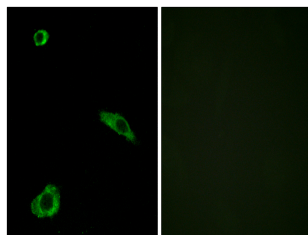
Clonality	Polyclonal
Clone ID	
Concentration	1 mg/mL
Conjugation	Unconjugated
Purification	The antibody was affinity-purified from rabbit antiserum by affinity-chromatography using epitope-specific immunogen.
Dilution Range	WB 1:500-2000 IHC-P 1:50-300 ELISA 2000-20000
Formulation	Liquid in PBS containing 50% Glycerol, 0.5% BSA and 0.02% Sodium Azide.
Isotype	IgG
Storage Instruction	Store at -20°C for up to 1 year from the date of receipt, and avoid repeat freeze-thaw cycles.

TARGET INFORMATION

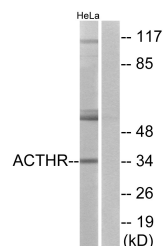
Gene ID	4158
Gene Symbol	MC2R
Uniprot ID	ACTHR_HUMAN
Immunogen	The antiserum was produced against synthesized peptide derived from the human ACTHR at the amino acid range 248-297
Immunogen Region	248-297 aa
Specificity	MC2-R Polyclonal Antibody detects endogenous levels of MC2-R protein.
Immunogen Sequence	



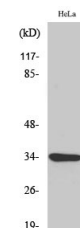
Western blot analysis of the lysates from COLO205 cells using ACTHR antibody.



Immunofluorescence analysis of MCF7 cells, using ACTHR Antibody. The picture on the right is blocked with the synthesized peptide.



Western blot analysis of lysates from HeLa cells, using ACTHR Antibody. The lane on the right is blocked with the synthesized peptide.



Western blot analysis of various cells using MC2-R Polyclonal Antibody