

Anti-MC1R antibody (268-317 aa) (STJ94038)

STJ94038

GENERAL INFORMATION

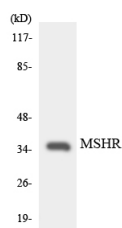
Product Type	Primary antibodies
Short Description	Rabbit polyclonal antibody anti-Melanocyte-stimulating hormone receptor (268-317 aa) is suitable for use in Western Blot, ELISA and Immunohistochemistry research applications.
Applications	WB/ELISA/IHC
Host/Source	Rabbit
Reactivity	Human/Rat/Mouse

PRODUCT PROPERTIES

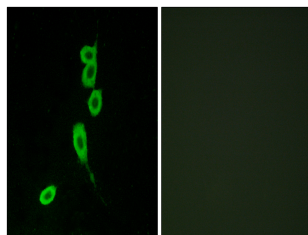
Clonality	Polyclonal
Clone ID	
Concentration	1 mg/mL
Conjugation	Unconjugated
Purification	The antibody was affinity-purified from rabbit antiserum by affinity-chromatography using epitope-specific immunogen.
Dilution Range	WB 1:500-2000 IHC-P 1:50-300 ELISA 2000-20000
Formulation	Liquid in PBS containing 50% Glycerol, 0.5% BSA and 0.02% Sodium Azide.
Isotype	IgG
Storage Instruction	Store at -20°C for up to 1 year from the date of receipt, and avoid repeat freeze-thaw cycles.

TARGET INFORMATION

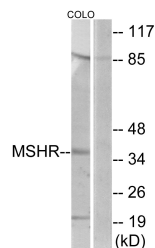
Gene ID	4157
Gene Symbol	MC1R
Uniprot ID	MSHR_HUMAN
Immunogen	The antiserum was produced against synthesized peptide derived from the human MSHR at the amino acid range 268-317
Immunogen Region	268-317 aa
Specificity	MC1-R Polyclonal Antibody detects endogenous levels of MC1-R protein.
Immunogen Sequence	



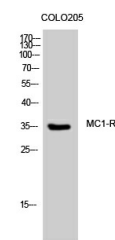
Western blot analysis of the lysates from HepG2 cells using MSHR antibody.



Immunofluorescence analysis of LOVO cells, using MSHR Antibody. The picture on the right is blocked with the synthesized peptide.



Western blot analysis of lysates from COLO205 cells, using MSHR Antibody. The lane on the right is blocked with the synthesized peptide.



Western blot analysis of COLO205 cells using MC1-R Polyclonal Antibody