

## Anti-MARCHF5 antibody (21-70 aa) (STJ94011)

STJ94011

### GENERAL INFORMATION

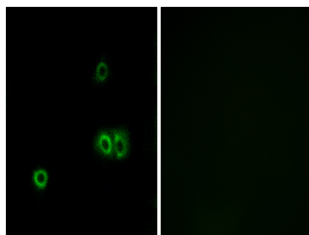
<b>Product Type</b>	Primary antibodies
<b>Short Description</b>	Rabbit polyclonal antibody anti-E3 ubiquitin-protein ligase MARCHF5 (21-70 aa) is suitable for use in Immunofluorescence, Western Blot and ELISA research applications.
<b>Applications</b>	IF/WB/ELISA
<b>Host/Source</b>	Rabbit
<b>Reactivity</b>	Human/Mouse/Rat

### PRODUCT PROPERTIES

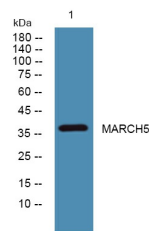
<b>Clonality</b>	Polyclonal
<b>Clone ID</b>	
<b>Concentration</b>	1 mg/mL
<b>Conjugation</b>	Unconjugated
<b>Purification</b>	The antibody was affinity-purified from rabbit antiserum by affinity-chromatography using epitope-specific immunogen.
<b>Dilution Range</b>	WB 1:500-2000 IF 1:200-1:1000 ELISA 1:40000
<b>Formulation</b>	Liquid in PBS containing 50% Glycerol, 0.5% BSA and 0.02% Sodium Azide.
<b>Isotype</b>	IgG
<b>Storage Instruction</b>	Store at -20°C for up to 1 year from the date of receipt, and avoid repeat freeze-thaw cycles.

### TARGET INFORMATION

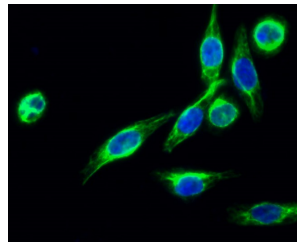
<b>Gene ID</b>	54708
<b>Gene Symbol</b>	MARCHF5
<b>Uniprot ID</b>	MARH5_HUMAN
<b>Immunogen</b>	The antiserum was produced against synthesized peptide derived from the human MARCH5 at the amino acid range 21-70
<b>Immunogen Region</b>	21-70 aa
<b>Specificity</b>	MARCH5 Polyclonal Antibody detects endogenous levels of 40607 protein.
<b>Immunogen Sequence</b>	



Immunofluorescence analysis of A549 cells, using MARCH5 Antibody. The picture on the right is blocked with the synthesized peptide.



Western blot analysis of lysates from U2OS cells, primary antibody was diluted at 1:1000, 4A°C over night



Immunofluorescence analysis of HeLa cell. 1. MARCH5 Polyclonal Antibody (green) was diluted at 1:200 (4A°C overnight). 2. Goat Anti Rabbit Alexa Fluor 488 Catalog (NA) was diluted at 1:1000 (room temperature, 50min). 3. DAPI (blue) 10min.