

## Anti-MARCHF1 antibody (Internal) (STJ94007)

STJ94007

### GENERAL INFORMATION

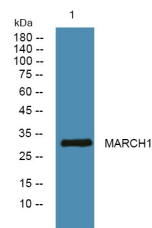
<b>Product Type</b>	Primary antibodies
<b>Short Description</b>	Rabbit polyclonal antibody anti-E3 ubiquitin-protein ligase MARCHF1 (Internal) is suitable for use in Immunohistochemistry, Immunofluorescence, Western Blot and ELISA research applications.
<b>Applications</b>	IHC/IF/WB/ELISA
<b>Host/Source</b>	Rabbit
<b>Reactivity</b>	Human/Rat/Mouse

### PRODUCT PROPERTIES

<b>Clonality</b>	Polyclonal
<b>Clone ID</b>	
<b>Concentration</b>	1 mg/mL
<b>Conjugation</b>	Unconjugated
<b>Purification</b>	The antibody was affinity-purified from rabbit antiserum by affinity-chromatography using epitope-specific immunogen.
<b>Dilution Range</b>	WB 1:500-2000 IHC 1:100-1:300 ELISA 1:40000 IF 1:50-200
<b>Formulation</b>	Liquid in PBS containing 50% Glycerol, 0.5% BSA and 0.02% Sodium Azide.
<b>Isotype</b>	IgG
<b>Storage Instruction</b>	Store at -20°C for up to 1 year from the date of receipt, and avoid repeat freeze-thaw cycles.

### TARGET INFORMATION

<b>Gene ID</b>	55016
<b>Gene Symbol</b>	MARCHF1
<b>Uniprot ID</b>	MARH1_HUMAN
<b>Immunogen</b>	Synthesized peptide derived from the Internal region of human 40603.
<b>Immunogen Region</b>	Internal
<b>Specificity</b>	MARCH1 Polyclonal Antibody detects endogenous levels of 40603 protein.
<b>Immunogen Sequence</b>	



Western blot analysis of lysates from DU145 cells, primary antibody was diluted at 1:1000, 4A°C over night