

## Anti-MAN1B1 antibody (100-180 aa) (STJ93998)

STJ93998

### GENERAL INFORMATION

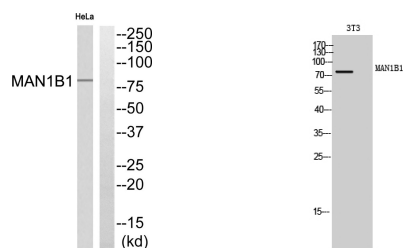
<b>Product Type</b>	Primary antibodies
<b>Short Description</b>	Rabbit polyclonal antibody anti-Endoplasmic reticulum mannosyl-oligosaccharide 1, 2-alpha-mannosidase (100-180 aa) is suitable for use in Western Blot and ELISA research applications.
<b>Applications</b>	WB/ELISA
<b>Host/Source</b>	Rabbit
<b>Reactivity</b>	Human/Rat/Mouse

### PRODUCT PROPERTIES

<b>Clonality</b>	Polyclonal
<b>Clone ID</b>	
<b>Concentration</b>	1 mg/mL
<b>Conjugation</b>	Unconjugated
<b>Purification</b>	The antibody was affinity-purified from rabbit antiserum by affinity-chromatography using epitope-specific immunogen.
<b>Dilution Range</b>	WB 1:500-1:2000 ELISA 1:10000
<b>Formulation</b>	Liquid in PBS containing 50% Glycerol, 0.5% BSA and 0.02% Sodium Azide.
<b>Isotype</b>	IgG
<b>Storage</b>	Store at -20°C for up to 1 year from the date of receipt, and avoid repeat freeze-thaw cycles.
<b>Instruction</b>	

### TARGET INFORMATION

<b>Gene ID</b>	<a href="#">11253</a>
<b>Gene Symbol</b>	<a href="#">MAN1B1</a>
<b>Uniprot ID</b>	<a href="#">MA1B1_HUMAN</a>
<b>Immunogen</b>	Synthesized peptide derived from MAN1B1 at the amino acid range 100-180
<b>Immunogen Region</b>	100-180 aa
<b>Specificity</b>	MAN1B1 Polyclonal Antibody detects endogenous levels of MAN1B1 protein.
<b>Immunogen Sequence</b>	



Western blot analysis of MAN1B1 Antibody. The lane on the right is blocked with the MAN1B1 peptide.

Western blot analysis of 3T3 cells using MAN1B1 Polyclonal Antibody

This product is suitable for in-vitro studies under the RESEARCH USE ONLY [RUO] licence. This product must not be used as for diagnostic or other medical purposes.  
St John's Laboratory Ltd, Knowledge Dock Business Centre, University Way, London, E16 2RD | Tel: 0208 223 3081