

## Anti-MAK antibody (126-175 aa) (STJ93993)

STJ93993

### GENERAL INFORMATION

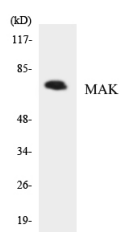
<b>Product Type</b>	Primary antibodies
<b>Short Description</b>	Rabbit polyclonal antibody anti-Serine/threonine-protein kinase MAK (126-175 aa) is suitable for use in Western Blot and ELISA research applications.
<b>Applications</b>	WB/ELISA
<b>Host/Source</b>	Rabbit
<b>Reactivity</b>	Human/Mouse/Rat

### PRODUCT PROPERTIES

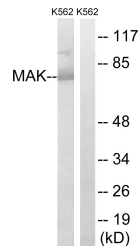
<b>Clonality</b>	Polyclonal
<b>Clone ID</b>	
<b>Concentration</b>	1 mg/mL
<b>Conjugation</b>	Unconjugated
<b>Purification</b>	The antibody was affinity-purified from rabbit antiserum by affinity-chromatography using epitope-specific immunogen.
<b>Dilution Range</b>	WB 1:500-1:2000 ELISA 1:40000
<b>Formulation</b>	Liquid in PBS containing 50% Glycerol, 0.5% BSA and 0.02% Sodium Azide.
<b>Isotype</b>	IgG
<b>Storage</b>	Store at -20°C for up to 1 year from the date of receipt, and avoid repeat freeze-thaw cycles.
<b>Instruction</b>	

### TARGET INFORMATION

<b>Gene ID</b>	4117
<b>Gene Symbol</b>	MAK
<b>Uniprot ID</b>	MAK_HUMAN
<b>Immunogen</b>	The antiserum was produced against synthesized peptide derived from the human MAK at the amino acid range 126-175
<b>Immunogen Region</b>	126-175 aa
<b>Specificity</b>	MAK Polyclonal Antibody detects endogenous levels of MAK protein.
<b>Immunogen Sequence</b>	



Western blot analysis of the lysates from HepG2 cells using MAK antibody.



Western blot analysis of lysates from K562 cells, using MAK Antibody. The lane on the right is blocked with the synthesized peptide.

This product is suitable for in-vitro studies under the RESEARCH USE ONLY [RUO] licence. This product must not be used as for diagnostic or other medical purposes.  
St John's Laboratory Ltd, Knowledge Dock Business Centre, University Way, London, E16 2RD | Tel: 0208 223 3081