

Anti-CHRM5 antibody (281-330 aa) (STJ93979)

STJ93979

GENERAL INFORMATION

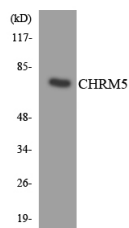
Product Type	Primary antibodies
Short Description	Rabbit polyclonal antibody anti-Muscarinic acetylcholine receptor M5 (281-330 aa) is suitable for use in Western Blot, Immunofluorescence and ELISA research applications.
Applications	WB/IF/ELISA
Host/Source	Rabbit
Reactivity	Human/Rat/Mouse

PRODUCT PROPERTIES

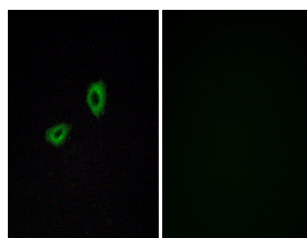
Clonality	Polyclonal
Clone ID	
Concentration	1 mg/mL
Conjugation	Unconjugated
Purification	The antibody was affinity-purified from rabbit antiserum by affinity-chromatography using epitope-specific immunogen.
Dilution Range	WB 1:500-1:2000 IF 1:200-1:1000 ELISA 1:40000
Formulation	Liquid in PBS containing 50% Glycerol, 0.5% BSA and 0.02% Sodium Azide.
Isotype	IgG
Storage Instruction	Store at -20°C for up to 1 year from the date of receipt, and avoid repeat freeze-thaw cycles.

TARGET INFORMATION

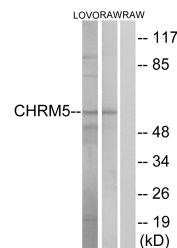
Gene ID	1133
Gene Symbol	CHRM5
Uniprot ID	ACM5_HUMAN
Immunogen	The antiserum was produced against synthesized peptide derived from the human CHRM5 at the amino acid range 281-330
Immunogen Region	281-330 aa
Specificity	mAChR M5 Polyclonal Antibody detects endogenous levels of mAChR M5 protein.
Immunogen Sequence	



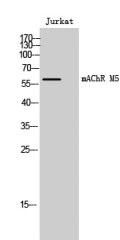
Western blot analysis of the lysates from K562 cells using CHRM5 antibody.



Immunofluorescence analysis of A549 cells, using CHRM5 Antibody. The picture on the right is blocked with the synthesized peptide.



Western blot analysis of lysates from LOVO and RAW284.7 cells, using CHRM5 Antibody. The lane on the right is blocked with the synthesized peptide.



Western blot analysis of Jurkat cells using mAChR M5 Polyclonal Antibody

This product is suitable for in-vitro studies under the RESEARCH USE ONLY [RUO] licence. This product must not be used as for diagnostic or other medical purposes.
St John's Laboratory Ltd, Knowledge Dock Business Centre, University Way, London, E16 2RD | Tel: 0208 223 3081