

Anti-CHRM4 antibody (236-285 aa) (STJ93978)

STJ93978

GENERAL INFORMATION

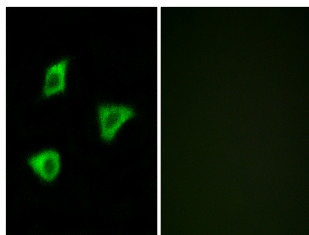
Product Type	Primary antibodies
Short Description	Rabbit polyclonal antibody anti-Muscarinic acetylcholine receptor M4 (236-285 aa) is suitable for use in Western Blot, Immunofluorescence and ELISA research applications.
Applications	WB/IF/ELISA
Host/Source	Rabbit
Reactivity	Human/Mouse/Rat

PRODUCT PROPERTIES

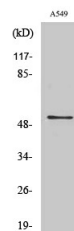
Clonality	Polyclonal
Clone ID	
Concentration	1 mg/mL
Conjugation	Unconjugated
Purification	The antibody was affinity-purified from rabbit antiserum by affinity-chromatography using epitope-specific immunogen.
Dilution Range	WB 1:500-1:2000 IF 1:200-1:1000 ELISA 1:10000
Formulation	Liquid in PBS containing 50% Glycerol, 0.5% BSA and 0.02% Sodium Azide.
Isotype	IgG
Storage Instruction	Store at -20°C for up to 1 year from the date of receipt, and avoid repeat freeze-thaw cycles.

TARGET INFORMATION

Gene ID	1132
Gene Symbol	CHRM4
Uniprot ID	ACM4_HUMAN
Immunogen	The antiserum was produced against synthesized peptide derived from the human CHRM4 at the amino acid range 236-285
Immunogen Region	236-285 aa
Specificity	mAChR M4 Polyclonal Antibody detects endogenous levels of mAChR M4 protein.
Immunogen Sequence	



Immunofluorescence analysis of LOVO cells, using CHRM4 Antibody. The picture on the right is blocked with the synthesized peptide.



Western blot analysis of various cells using mAChR M4 Polyclonal Antibody