

Anti-CHRM1 antibody (295-344 aa) (STJ93976)

STJ93976

GENERAL INFORMATION

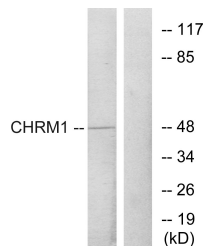
Product Type	Primary antibodies
Short Description	Rabbit polyclonal antibody anti-Muscarinic acetylcholine receptor M1 (295-344 aa) is suitable for use in Western Blot and ELISA research applications.
Applications	WB/ELISA
Host/Source	Rabbit
Reactivity	Human/Mouse/Rat

PRODUCT PROPERTIES

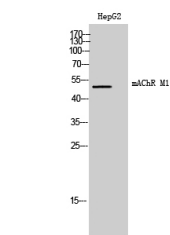
Clonality	Polyclonal
Clone ID	
Concentration	1 mg/mL
Conjugation	Unconjugated
Purification	The antibody was affinity-purified from rabbit antiserum by affinity-chromatography using epitope-specific immunogen.
Dilution Range	WB 1:500-1:2000 ELISA 1:5000
Formulation	Liquid in PBS containing 50% Glycerol, 0.5% BSA and 0.02% Sodium Azide.
Isotype	IgG
Storage	Store at -20°C for up to 1 year from the date of receipt, and avoid repeat freeze-thaw cycles.
Instruction	

TARGET INFORMATION

Gene ID	1128
Gene Symbol	CHRM1
Uniprot ID	ACM1_HUMAN
Immunogen	The antiserum was produced against synthesized peptide derived from the human CHRM1 at the amino acid range 295-344
Immunogen Region	295-344 aa
Specificity	mAChR M1 Polyclonal Antibody detects endogenous levels of mAChR M1 protein.
Immunogen Sequence	



Western blot analysis of lysates from HepG2 cells, using CHRM1 Antibody. The lane on the right is blocked with the synthesized peptide.



Western blot analysis of HepG2 cells using mAChR M1 Polyclonal Antibody

This product is suitable for in-vitro studies under the RESEARCH USE ONLY [RUO] licence. This product must not be used as for diagnostic or other medical purposes.
St John's Laboratory Ltd, Knowledge Dock Business Centre, University Way, London, E16 2RD | Tel: 0208 223 3081