

Anti-LFNG antibody (121-170 aa) (STJ93970)

STJ93970

GENERAL INFORMATION

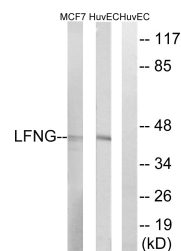
Product Type	Primary antibodies
Short Description	Rabbit polyclonal antibody anti-Beta-1, 3-N-acetylglucosaminyltransferase lunatic fringe (121-170 aa) is suitable for use in Western Blot and ELISA research applications.
Applications	WB/ELISA
Host/Source	Rabbit
Reactivity	Human/Mouse/Rat

PRODUCT PROPERTIES

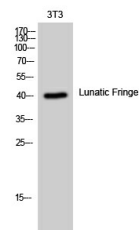
Clonality	Polyclonal
Clone ID	
Concentration	1 mg/mL
Conjugation	Unconjugated
Purification	The antibody was affinity-purified from rabbit antiserum by affinity-chromatography using epitope-specific immunogen.
Dilution Range	WB 1:500-1:2000 ELISA 1:10000
Formulation	Liquid in PBS containing 50% Glycerol, 0.5% BSA and 0.02% Sodium Azide.
Isotype	IgG
Storage	Store at -20°C for up to 1 year from the date of receipt, and avoid repeat freeze-thaw cycles.
Instruction	

TARGET INFORMATION

Gene ID	3955
Gene Symbol	LFNG
Uniprot ID	LFNG_HUMAN
Immunogen	The antiserum was produced against synthesized peptide derived from the human LFNG at the amino acid range 121-170
Immunogen Region	121-170 aa
Specificity	Lunatic Fringe Polyclonal Antibody detects endogenous levels of Lunatic Fringe protein.
Immunogen Sequence	



Western blot analysis of lysates from HUVEC and MCF-7 cells, using LFNG Antibody. The lane on the right is blocked with the synthesized peptide.



Western blot analysis of 3T3 cells using Lunatic Fringe Polyclonal Antibody diluted at 1:1000

This product is suitable for in-vitro studies under the RESEARCH USE ONLY [RUO] licence. This product must not be used as for diagnostic or other medical purposes.
St John's Laboratory Ltd, Knowledge Dock Business Centre, University Way, London, E16 2RD | Tel: 0208 223 3081