

Anti-LTB antibody (181-230 aa) (STJ93966)

STJ93966

GENERAL INFORMATION

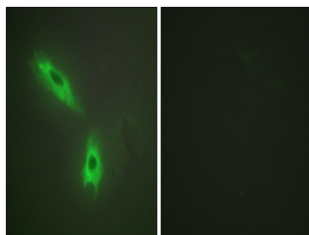
Product Type	Primary antibodies
Short Description	Rabbit polyclonal antibody anti-Lymphotoxin-beta (181-230 aa) is suitable for use in Western Blot, Immunofluorescence and ELISA research applications.
Applications	WB/IF/ELISA
Host/Source	Rabbit
Reactivity	Human/Mouse

PRODUCT PROPERTIES

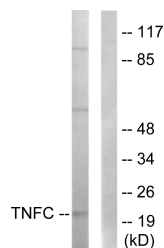
Clonality	Polyclonal
Clone ID	
Concentration	1 mg/mL
Conjugation	Unconjugated
Purification	The antibody was affinity-purified from rabbit antiserum by affinity-chromatography using epitope-specific immunogen.
Dilution Range	WB 1:500-1:2000 IF 1:200-1:1000 ELISA 1:10000
Formulation	Liquid in PBS containing 50% Glycerol, 0.5% BSA and 0.02% Sodium Azide.
Isotype	IgG
Storage Instruction	Store at -20°C for up to 1 year from the date of receipt, and avoid repeat freeze-thaw cycles.

TARGET INFORMATION

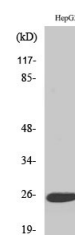
Gene ID	4050
Gene Symbol	LTB
Uniprot ID	TNFC_HUMAN
Immunogen	The antiserum was produced against synthesized peptide derived from the human TNFC at the amino acid range 181-230
Immunogen Region	181-230 aa
Specificity	LT-Beta Polyclonal Antibody detects endogenous levels of LT-Beta protein.
Immunogen Sequence	



Immunofluorescence analysis of HeLa cells, using TNFC Antibody. The picture on the right is blocked with the synthesized peptide.



Western blot analysis of lysates from HepG2 cells, using TNFC Antibody. The lane on the right is blocked with the synthesized peptide.



Western blot analysis of various cells using LT-Beta Polyclonal Antibody

This product is suitable for in-vitro studies under the RESEARCH USE ONLY [RUO] licence. This product must not be used as for diagnostic or other medical purposes.
St John's Laboratory Ltd, Knowledge Dock Business Centre, University Way, London, E16 2RD | Tel: 0208 223 3081