

Anti-LRP3 antibody (17-66 aa) (STJ93957)

STJ93957

GENERAL INFORMATION

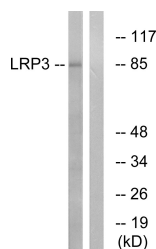
Product Type	Primary antibodies
Short Description	Rabbit polyclonal antibody anti-Low-density lipoprotein receptor-related protein 3 (17-66 aa) is suitable for use in Western Blot and Immunohistochemistry research applications.
Applications	WB/IHC
Host/Source	Rabbit
Reactivity	Human/Mouse/Rat

PRODUCT PROPERTIES

Clonality	Polyclonal
Clone ID	
Concentration	1 mg/mL
Conjugation	Unconjugated
Purification	The antibody was affinity-purified from rabbit antiserum by affinity-chromatography using epitope-specific immunogen.
Dilution Range	WB 1:500-2000 IHC-P 1:50-300
Formulation	Liquid in PBS containing 50% Glycerol, 0.5% BSA and 0.02% Sodium Azide.
Isotype	IgG
Storage	Store at -20°C for up to 1 year from the date of receipt, and avoid repeat freeze-thaw cycles.
Instruction	

TARGET INFORMATION

Gene ID	4037
Gene Symbol	LRP3
Uniprot ID	LRP3_HUMAN
Immunogen	The antiserum was produced against synthesized peptide derived from the human LRP3 at the amino acid range 17-66
Immunogen Region	17-66 aa
Specificity	LRP3 Polyclonal Antibody detects endogenous levels of LRP3 protein.
Immunogen Sequence	



Western blot analysis of lysates from RAW264.7 cells, using LRP3 Antibody. The lane on the right is blocked with the synthesized peptide.