

Anti-LRP10 antibody (204-253 aa) (STJ93955)

STJ93955

GENERAL INFORMATION

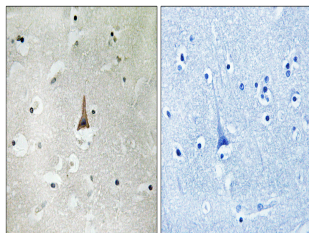
Product Type	Primary antibodies
Short Description	Rabbit polyclonal antibody anti-Low-density lipoprotein receptor-related protein 10 (204-253 aa) is suitable for use in Western Blot, Immunohistochemistry, Immunofluorescence and ELISA research applications.
Applications	WB/IHC/IF/ELISA
Host/Source	Rabbit
Reactivity	Human/Mouse/Rat

PRODUCT PROPERTIES

Clonality	Polyclonal
Clone ID	
Concentration	1 mg/mL
Conjugation	Unconjugated
Purification	The antibody was affinity-purified from rabbit antiserum by affinity-chromatography using epitope-specific immunogen.
Dilution Range	WB 1:500-1:2000 IHC 1:100-1:300 ELISA 1:10000 IF 1:50-200
Formulation	Liquid in PBS containing 50% Glycerol, 0.5% BSA and 0.02% Sodium Azide.
Isotype	IgG
Storage Instruction	Store at -20°C for up to 1 year from the date of receipt, and avoid repeat freeze-thaw cycles.

TARGET INFORMATION

Gene ID	26020
Gene Symbol	LRP10
Uniprot ID	LRP10_HUMAN
Immunogen	The antiserum was produced against synthesized peptide derived from the human LRP10 at the amino acid range 204-253
Immunogen Region	204-253 aa
Specificity	LRP10 Polyclonal Antibody detects endogenous levels of LRP10 protein.
Immunogen Sequence	



Immunohistochemistry analysis of paraffin-embedded human brain tissue, using LRP10 Antibody. The picture on the right is blocked with the synthesized peptide.