

Anti-LIPI antibody (289-338 aa) (STJ93951)

STJ93951

GENERAL INFORMATION

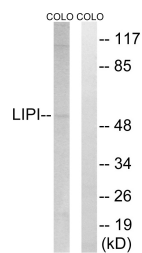
Product Type	Primary antibodies
Short Description	Rabbit polyclonal antibody anti-Lipase member I (289-338 aa) is suitable for use in Western Blot, Immunohistochemistry, Immunofluorescence and ELISA research applications.
Applications	WB/IHC/IF/ELISA
Host/Source	Rabbit
Reactivity	Human/Rat/Mouse

PRODUCT PROPERTIES

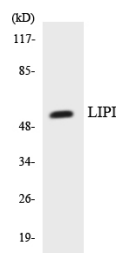
Clonality	Polyclonal
Clone ID	
Concentration	1 mg/mL
Conjugation	Unconjugated
Purification	The antibody was affinity-purified from rabbit antiserum by affinity-chromatography using epitope-specific immunogen.
Dilution Range	WB 1:500-1:2000 IHC 1:100-1:300 ELISA 1:10000 IF 1:50-200
Formulation	Liquid in PBS containing 50% Glycerol, 0.5% BSA and 0.02% Sodium Azide.
Isotype	IgG
Storage Instruction	Store at -20°C for up to 1 year from the date of receipt, and avoid repeat freeze-thaw cycles.

TARGET INFORMATION

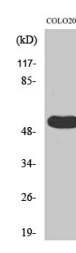
Gene ID	149998
Gene Symbol	LIPI
Uniprot ID	LIPI_HUMAN
Immunogen	The antiserum was produced against synthesized peptide derived from the human LIPI at the amino acid range 289-338
Immunogen Region	289-338 aa
Specificity	LPD lipase Polyclonal Antibody detects endogenous levels of LPD lipase protein.
Immunogen Sequence	



Western blot analysis of lysates from COLO cells, using LIPI Antibody. The lane on the right is blocked with the synthesized peptide.



Western blot analysis of the lysates from HepG2 cells using LIPI antibody.



Western blot analysis of various cells using LPD lipase Polyclonal Antibody