

## Anti-GPAT3 antibody (381-430 aa) (STJ93949)

STJ93949

### GENERAL INFORMATION

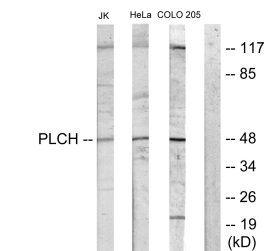
<b>Product Type</b>	Primary antibodies
<b>Short Description</b>	Rabbit polyclonal antibody anti-Glycerol-3-phosphate acyltransferase 3 (381-430 aa) is suitable for use in Western Blot, Immunohistochemistry, Immunofluorescence and ELISA research applications.
<b>Applications</b>	WB/IHC/IF/ELISA
<b>Host/Source</b>	Rabbit
<b>Reactivity</b>	Human/Mouse/Rat

### PRODUCT PROPERTIES

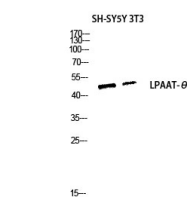
<b>Clonality</b>	Polyclonal
<b>Clone ID</b>	
<b>Concentration</b>	1 mg/mL
<b>Conjugation</b>	Unconjugated
<b>Purification</b>	The antibody was affinity-purified from rabbit antiserum by affinity-chromatography using epitope-specific immunogen.
<b>Dilution</b>	WB 1:500-1:2000
<b>Range</b>	IHC 1:100-1:300 IF 1:200-1:1000 ELISA 1:10000
<b>Formulation</b>	Liquid in PBS containing 50% Glycerol, 0.5% BSA and 0.02% Sodium Azide.
<b>Isotype</b>	IgG
<b>Storage Instruction</b>	Store at -20°C for up to 1 year from the date of receipt, and avoid repeat freeze-thaw cycles.

### TARGET INFORMATION

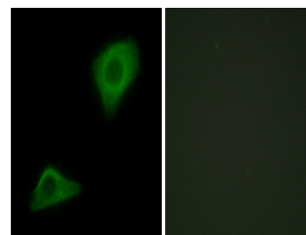
<b>Gene ID</b>	84803
<b>Gene Symbol</b>	GPAT3
<b>Uniprot ID</b>	GPAT3_HUMAN
<b>Immunogen</b>	The antiserum was produced against synthesized peptide derived from the human AGPAT9 at the amino acid range 381-430
<b>Immunogen Region</b>	381-430 aa
<b>Specificity</b>	LPAAT-Theta Polyclonal Antibody detects endogenous levels of LPAAT-Theta protein.
<b>Immunogen Sequence</b>	



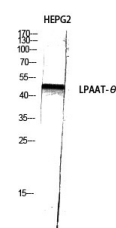
Western blot analysis of lysates from Jurkat cells, COLO205 cells, HeLa cells, and HUVEC cells, using PLCH Antibody. The lane on the right is blocked with the synthesized peptide.



Western blot analysis of SH-SY5Y 3T3 cells using LPAAT-Theta antibody. Antibody was diluted at 1:1000



Immunofluorescence analysis of HepG2 cells, using PLCH Antibody. The picture on the right is blocked with the synthesized peptide.



Western blot analysis of HEPG2 cells using LPAAT-Theta Polyclonal Antibody diluted at 1:1000