

## Anti-AGPAT4 antibody (151-200 aa) (STJ93947)

STJ93947

### GENERAL INFORMATION

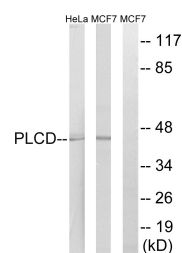
<b>Product Type</b>	Primary antibodies
<b>Short Description</b>	Rabbit polyclonal antibody anti-1-acyl-sn-glycerol-3-phosphate acyltransferase delta (151-200 aa) is suitable for use in Western Blot and Immunohistochemistry research applications.
<b>Applications</b>	WB/IHC
<b>Host/Source</b>	Rabbit
<b>Reactivity</b>	Human/Mouse/Rat

### PRODUCT PROPERTIES

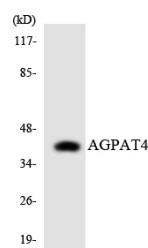
<b>Clonality</b>	Polyclonal
<b>Clone ID</b>	
<b>Concentration</b>	1 mg/mL
<b>Conjugation</b>	Unconjugated
<b>Purification</b>	The antibody was affinity-purified from rabbit antiserum by affinity-chromatography using epitope-specific immunogen.
<b>Dilution Range</b>	WB 1:500-2000 IHC-P 1:50-300
<b>Formulation</b>	Liquid in PBS containing 50% Glycerol, 0.5% BSA and 0.02% Sodium Azide.
<b>Isotype</b>	IgG
<b>Storage</b>	Store at -20°C for up to 1 year from the date of receipt, and avoid repeat freeze-thaw cycles.
<b>Instruction</b>	

### TARGET INFORMATION

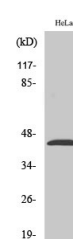
<b>Gene ID</b>	56895
<b>Gene Symbol</b>	AGPAT4
<b>Uniprot ID</b>	PLCD_HUMAN
<b>Immunogen</b>	The antiserum was produced against synthesized peptide derived from the human AGPAT4 at the amino acid range 151-200
<b>Immunogen Region</b>	151-200 aa
<b>Specificity</b>	LPAAT-Delta Polyclonal Antibody detects endogenous levels of LPAAT-Delta protein.
<b>Immunogen Sequence</b>	



Western blot analysis of lysates from HeLa and MCF-7 cells, using AGPAT4 Antibody. The lane on the right is blocked with the synthesized peptide.



Western blot analysis of the lysates from HeLa cells using AGPAT4 antibody.



Western blot analysis of various cells using LPAAT-Delta Polyclonal Antibody diluted at 1:500.