

Anti-TRARG1 antibody (1-50 aa) (STJ93945)

STJ93945

GENERAL INFORMATION

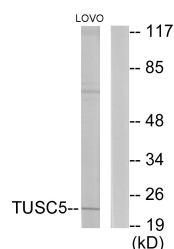
Product Type	Primary antibodies
Short Description	Rabbit polyclonal antibody anti-Trafficking regulator of GLUT4 1 (1-50 aa) is suitable for use in Western Blot, ELISA and Immunohistochemistry research applications.
Applications	WB/ELISA/IHC
Host/Source	Rabbit
Reactivity	Human/Rat/Mouse

PRODUCT PROPERTIES

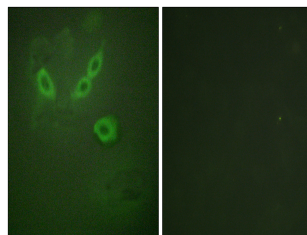
Clonality	Polyclonal
Clone ID	
Concentration	1 mg/mL
Conjugation	Unconjugated
Purification	The antibody was affinity-purified from rabbit antiserum by affinity-chromatography using epitope-specific immunogen.
Dilution Range	WB 1:500-2000 IHC-P 1:50-300 ELISA 2000-20000
Formulation	Liquid in PBS containing 50% Glycerol, 0.5% BSA and 0.02% Sodium Azide.
Isotype	IgG
Storage Instruction	Store at -20°C for up to 1 year from the date of receipt, and avoid repeat freeze-thaw cycles.

TARGET INFORMATION

Gene ID	286753
Gene Symbol	TRARG1
Uniprot ID	TARG1_HUMAN
Immunogen	The antiserum was produced against synthesized peptide derived from the human TUSC5 at the amino acid range 1-50
Immunogen Region	1-50 aa
Specificity	LOST1 Polyclonal Antibody detects endogenous levels of LOST1 protein.
Immunogen Sequence	



Western blot analysis of lysates from LOVO cells, using TUSC5 Antibody. The lane on the right is blocked with the synthesized peptide.



Immunofluorescence analysis of HeLa cells, using TUSC5 Antibody. The picture on the right is blocked with the synthesized peptide.