

Anti-STK11 antibody (384-433 aa) (STJ93937)

STJ93937

GENERAL INFORMATION

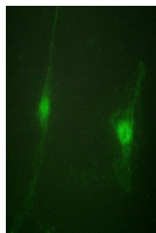
Product Type	Primary antibodies
Short Description	Rabbit polyclonal antibody anti-Serine/threonine-protein kinase STK11 (384-433 aa) is suitable for use in Western Blot, Immunohistochemistry, Immunofluorescence and ELISA research applications.
Applications	WB/IHC/IF/ELISA
Host/Source	Rabbit
Reactivity	Human/Mouse

PRODUCT PROPERTIES

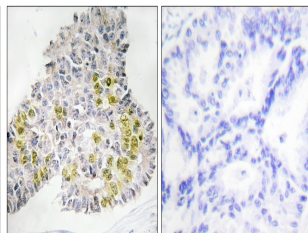
Clonality	Polyclonal
Clone ID	
Concentration	1 mg/mL
Conjugation	Unconjugated
Purification	The antibody was affinity-purified from rabbit antiserum by affinity-chromatography using epitope-specific immunogen.
Dilution	WB 1:500-2000
Range	IHC 1:100-1:300 IF 1:200-1:1000 ELISA 1:20000
Formulation	Liquid in PBS containing 50% Glycerol, 0.5% BSA and 0.02% Sodium Azide.
Isotype	IgG
Storage Instruction	Store at -20°C for up to 1 year from the date of receipt, and avoid repeat freeze-thaw cycles.

TARGET INFORMATION

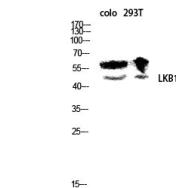
Gene ID	6794
Gene Symbol	STK11
Uniprot ID	STK11_HUMAN
Immunogen	The antiserum was produced against synthesized peptide derived from the human LKB1 at the amino acid range 384-433
Immunogen Region	384-433 aa
Specificity	LKB1 Polyclonal Antibody detects endogenous levels of LKB1 protein.
Immunogen Sequence	



Immunofluorescence analysis of NIH/3T3 cells, using LKB1 Antibody. The picture on the right is blocked with the synthesized peptide.



Immunohistochemistry analysis of paraffin-embedded human lung carcinoma tissue, using LKB1 Antibody. The picture on the right is blocked with the synthesized peptide.



Western blot analysis of colo 293T lysis using LKB1 antibody. Antibody was diluted at 1:500