

Anti-LIMK-1/2 antibody (481-530 aa) (STJ93929)

STJ93929

GENERAL INFORMATION

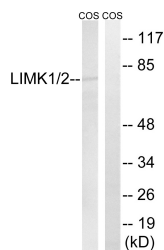
| | |
|--------------------------|---|
| Product Type | Primary antibodies |
| Short Description | Rabbit polyclonal antibody anti-LIM domain kinase 1 and LIM domain kinase 2 (481-530 aa) is suitable for use in Western Blot, Immunohistochemistry, Immunofluorescence and ELISA research applications. |
| Applications | WB/IHC/IF/ELISA |
| Host/Source | Rabbit |
| Reactivity | Human/Mouse/Rat/Monkey |

PRODUCT PROPERTIES

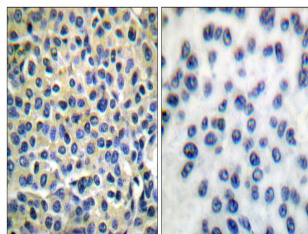
| | |
|----------------------------|---|
| Clonality | Polyclonal |
| Clone ID | |
| Concentration | 1 mg/mL |
| Conjugation | Unconjugated |
| Purification | The antibody was affinity-purified from rabbit antiserum by affinity-chromatography using epitope-specific immunogen. |
| Dilution Range | WB 1:500-1:2000 IHC 1:100-1:300 ELISA 1:40000 IF 1:50-200 |
| Formulation | Liquid in PBS containing 50% Glycerol, 0.5% BSA and 0.02% Sodium Azide. |
| Isotype | IgG |
| Storage Instruction | Store at -20°C for up to 1 year from the date of receipt, and avoid repeat freeze-thaw cycles. |

TARGET INFORMATION

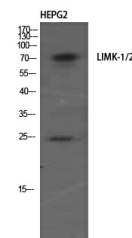
| | |
|---------------------------|---|
| Gene ID | 3985 3984 |
| Gene Symbol | LIMK2 LIMK1 |
| Uniprot ID | LIMK2_HUMAN LIMK1_HUMAN |
| Immunogen | The antiserum was produced against synthesized peptide derived from the human LIMK1/2 at the amino acid range 481-530 |
| Region | 481-530 aa |
| Specificity | LIMK-1/2 Polyclonal Antibody detects endogenous levels of LIMK-1/2 protein. |
| Immunogen Sequence | |



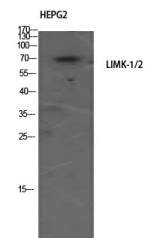
Western blot analysis of lysates from COS7 cells, using LIMK1/2 Antibody. The lane on the right is blocked with the synthesized peptide.



Immunohistochemistry analysis of paraffin-embedded human breast carcinoma tissue, using LIMK1/2 Antibody. The picture on the right is blocked with the synthesized peptide.



Western blot analysis of HEPG2 using LIMK-1/2 Polyclonal Antibody. Antibody was diluted at 1:500



Western blot analysis of HEPG2 using LIMK-1/2 Polyclonal Antibody. Antibody was diluted at 1:500

This product is suitable for in-vitro studies under the RESEARCH USE ONLY [RUO] licence. This product must not be used as for diagnostic or other medical purposes.
St John's Laboratory Ltd, Knowledge Dock Business Centre, University Way, London, E16 2RD | Tel: 0208 223 3081