

Anti-LGR6 antibody (471-520 aa) (STJ93922)

STJ93922

GENERAL INFORMATION

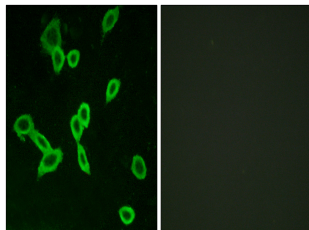
Product Type	Primary antibodies
Short Description	Rabbit polyclonal antibody anti-Leucine-rich repeat-containing G-protein coupled receptor 6 (471-520 aa) is suitable for use in Western Blot and Immunohistochemistry research applications.
Applications	WB/IHC
Host/Source	Rabbit
Reactivity	Human/Rat/Mouse

PRODUCT PROPERTIES

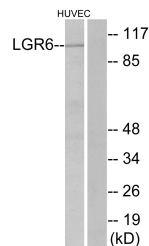
Clonality	Polyclonal
Clone ID	
Concentration	1 mg/mL
Conjugation	Unconjugated
Purification	The antibody was affinity-purified from rabbit antiserum by affinity-chromatography using epitope-specific immunogen.
Dilution Range	WB 1:500-2000 IHC-P 1:50-300
Formulation	Liquid in PBS containing 50% Glycerol, 0.5% BSA and 0.02% Sodium Azide.
Isotype	IgG
Storage	Store at -20°C for up to 1 year from the date of receipt, and avoid repeat freeze-thaw cycles.
Instruction	

TARGET INFORMATION

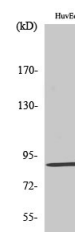
Gene ID	59352
Gene Symbol	LGR6
Uniprot ID	LGR6_HUMAN
Immunogen	The antiserum was produced against synthesized peptide derived from the human LGR6 at the amino acid range 471-520
Immunogen Region	471-520 aa
Specificity	LGR6 Polyclonal Antibody detects endogenous levels of LGR6 protein.
Immunogen Sequence	



Immunofluorescence analysis of LOVO cells, using LGR6 Antibody. The picture on the right is blocked with the synthesized peptide.



Western blot analysis of lysates from HUVEC cells, using LGR6 Antibody. The lane on the right is blocked with the synthesized peptide.



Western blot analysis of various cells using LGR6 Polyclonal Antibody diluted at 1:500

This product is suitable for in-vitro studies under the RESEARCH USE ONLY [RUO] licence. This product must not be used as for diagnostic or other medical purposes.
St John's Laboratory Ltd, Knowledge Dock Business Centre, University Way, London, E16 2RD | Tel: 0208 223 3081