

Anti-LATS1/2 antibody (1041-1090 aa) (STJ93908)

STJ93908

GENERAL INFORMATION

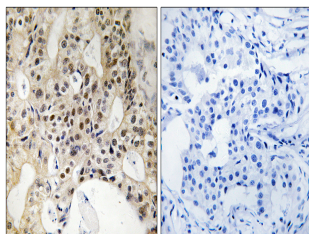
Product Type	Primary antibodies
Short Description	Rabbit polyclonal antibody anti-Serine/threonine-protein kinase LATS1 and Serine/threonine-protein kinase LATS2 (1041-1090 aa) is suitable for use in Western Blot, Immunohistochemistry, Immunofluorescence and ELISA research applications.
Applications	WB/IHC/IF/ELISA
Host/Source	Rabbit
Reactivity	Human/Mouse

PRODUCT PROPERTIES

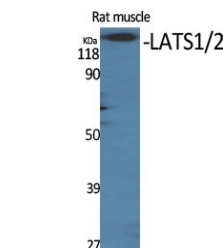
Clonality	Polyclonal
Clone ID	
Concentration	1 mg/mL
Conjugation	Unconjugated
Purification	The antibody was affinity-purified from rabbit antiserum by affinity-chromatography using epitope-specific immunogen.
Dilution	WB 1:500-1:2000
Range	IHC-P 1:100-300 ELISA 1:20000 IF 1:100-300
Formulation	Liquid in PBS containing 50% Glycerol, 0.5% BSA and 0.02% Sodium Azide.
Isotype	IgG
Storage Instruction	Store at -20°C for up to 1 year from the date of receipt, and avoid repeat freeze-thaw cycles.

TARGET INFORMATION

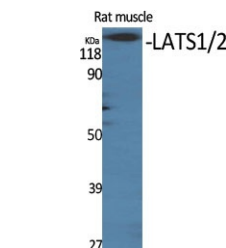
Gene ID	26524 9113
Gene Symbol	LATS2 LATS1
Uniprot ID	LATS2_HUMAN LATS1_HUMAN
Immunogen	The antiserum was produced against synthesized peptide derived from the human LATS1/2 at the amino acid range 1041-1090
Immunogen Region	1041-1090 aa
Specificity	LATS1/2 Polyclonal Antibody detects endogenous levels of LATS1/2 protein.
Immunogen Sequence	



Immunohistochemistry analysis of paraffin-embedded human breast carcinoma tissue, using LATS1/2 Antibody. The picture on the right is blocked with the synthesized peptide.



Western blot analysis of LATS1/2 Antibody



Western blot analysis of mouse muscle cells using LATS1/2 Polyclonal Antibody diluted at 1/14 500

This product is suitable for in-vitro studies under the RESEARCH USE ONLY [RUO] licence. This product must not be used as for diagnostic or other medical purposes.
St John's Laboratory Ltd, Knowledge Dock Business Centre, University Way, London, E16 2RD | Tel: 0208 223 3081