

Anti-LAMC3 antibody (1361-1410 aa) (STJ93897)

STJ93897

GENERAL INFORMATION

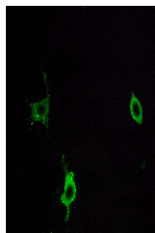
Product Type	Primary antibodies
Short Description	Rabbit polyclonal antibody anti-Laminin subunit gamma-3 (1361-1410 aa) is suitable for use in Western Blot, Immunohistochemistry, Immunofluorescence and ELISA research applications.
Applications	WB/IHC/IF/ELISA
Host/Source	Rabbit
Reactivity	Human/Mouse

PRODUCT PROPERTIES

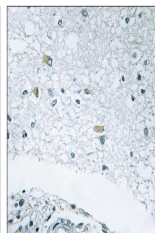
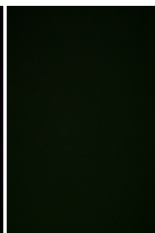
Clonality	Polyclonal
Clone ID	
Concentration	1 mg/mL
Conjugation	Unconjugated
Purification	The antibody was affinity-purified from rabbit antiserum by affinity-chromatography using epitope-specific immunogen.
Dilution Range	WB 1:500-1:2000 IHC 1:100-1:300 IF 1:200-1:1000 ELISA 1:40000
Formulation	Liquid in PBS containing 50% Glycerol, 0.5% BSA and 0.02% Sodium Azide.
Isotype	IgG
Storage Instruction	Store at -20°C for up to 1 year from the date of receipt, and avoid repeat freeze-thaw cycles.

TARGET INFORMATION

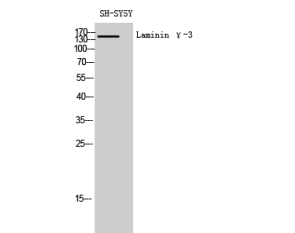
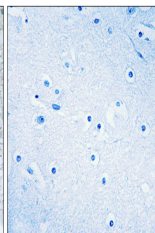
Gene ID	10319
Gene Symbol	LAMC3
Uniprot ID	LAMC3_HUMAN
Immunogen	The antiserum was produced against synthesized peptide derived from the human LAMC3 at the amino acid range 1361-1410
Immunogen Region	1361-1410 aa
Specificity	Laminin Gamma-3 Polyclonal Antibody detects endogenous levels of Laminin Gamma-3 protein.
Immunogen Sequence	



Immunofluorescence analysis of LOVO cells, using LAMC3 Antibody. The picture on the right is blocked with the synthesized peptide.



Immunohistochemistry analysis of paraffin-embedded human brain tissue, using LAMC3 Antibody. The picture on the right is blocked with the synthesized peptide.



Western blot analysis of SH-SY5Y cells using Laminin Gamma-3 Polyclonal Antibody diluted at 1/4 1000