

Anti-KCNS2 antibody (197-246 aa) (STJ93881)

STJ93881

GENERAL INFORMATION

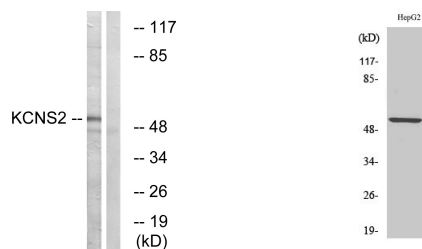
Product Type	Primary antibodies
Short Description	Rabbit polyclonal antibody anti-Potassium voltage-gated channel subfamily S member 2 channel alpha subunit 2 (197-246 aa) is suitable for use in Western Blot and Immunohistochemistry research applications.
Applications	WB/IHC
Host/Source	Rabbit
Reactivity	Human/Mouse/Rat

PRODUCT PROPERTIES

Clonality	Polyclonal
Clone ID	
Concentration	1 mg/mL
Conjugation	Unconjugated
Purification	The antibody was affinity-purified from rabbit antiserum by affinity-chromatography using epitope-specific immunogen.
Dilution	WB 1:500-2000
Range	IHC-P 1:50-300
Formulation	Liquid in PBS containing 50% Glycerol, 0.5% BSA and 0.02% Sodium Azide.
Isotype	IgG
Storage	Store at -20°C for up to 1 year from the date of receipt, and avoid repeat freeze-thaw cycles.
Instruction	

TARGET INFORMATION

Gene ID	3788
Gene Symbol	KCNS2
Uniprot ID	KCNS2_HUMAN
Immunogen	The antiserum was produced against synthesized peptide derived from the human KCNS2 at the amino acid range 197-246
Immunogen Region	197-246 aa
Specificity	KV9.2 Polyclonal Antibody detects endogenous levels of KV9.2 protein.
Immunogen Sequence	



Western blot analysis of lysates from HepG2 cells, using KCNS2 Antibody. The lane on the right is blocked with the synthesized peptide.

Western blot analysis of various cells using KV9.2 Polyclonal Antibody