

## Anti-KSR2 antibody (671-720 aa) (STJ93862)

STJ93862

### GENERAL INFORMATION

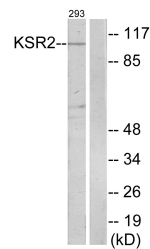
<b>Product Type</b>	Primary antibodies
<b>Short Description</b>	Rabbit polyclonal antibody anti-Kinase suppressor of Ras 2 (671-720 aa) is suitable for use in Western Blot, Immunohistochemistry, Immunofluorescence and ELISA research applications.
<b>Applications</b>	WB/IHC/IF/ELISA
<b>Host/Source</b>	Rabbit
<b>Reactivity</b>	Human/Mouse

### PRODUCT PROPERTIES

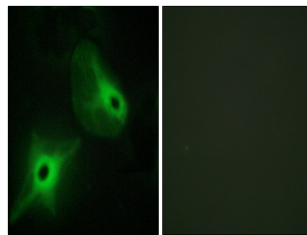
<b>Clonality</b>	Polyclonal
<b>Clone ID</b>	
<b>Concentration</b>	1 mg/mL
<b>Conjugation</b>	Unconjugated
<b>Purification</b>	The antibody was affinity-purified from rabbit antiserum by affinity-chromatography using epitope-specific immunogen.
<b>Dilution Range</b>	WB 1:500-1:2000 IHC 1:100-1:300 IF 1:200-1:1000 ELISA 1:40000
<b>Formulation</b>	Liquid in PBS containing 50% Glycerol, 0.5% BSA and 0.02% Sodium Azide.
<b>Isotype</b>	IgG
<b>Storage Instruction</b>	Store at -20°C for up to 1 year from the date of receipt, and avoid repeat freeze-thaw cycles.

### TARGET INFORMATION

<b>Gene ID</b>	<a href="#">283455</a>
<b>Gene Symbol</b>	<a href="#">KSR2</a>
<b>Uniprot ID</b>	<a href="#">KSR2_HUMAN</a>
<b>Immunogen</b>	The antiserum was produced against synthesized peptide derived from the human KSR2 at the amino acid range 671-720
<b>Immunogen Region</b>	671-720 aa
<b>Specificity</b>	Ksr2 Polyclonal Antibody detects endogenous levels of Ksr2 protein.
<b>Immunogen Sequence</b>	



Western blot analysis of lysates from 293 cells, using KSR2 Antibody. The lane on the right is blocked with the synthesized peptide.



Immunofluorescence analysis of HeLa cells, using KSR2 Antibody. The picture on the right is blocked with the synthesized peptide.