

Anti-KLHL29 antibody (261-310 aa) (STJ93850)

STJ93850

GENERAL INFORMATION

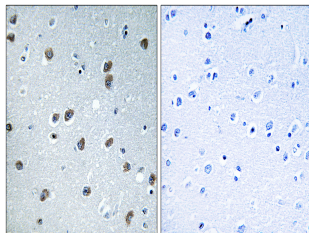
Product Type	Primary antibodies
Short Description	Rabbit polyclonal antibody anti-Kelch-like protein 29 (261-310 aa) is suitable for use in Immunohistochemistry, Immunofluorescence and ELISA research applications.
Applications	IHC/IF/ELISA
Host/Source	Rabbit
Reactivity	Human/Mouse

PRODUCT PROPERTIES

Clonality	Polyclonal
Clone ID	
Concentration	1 mg/mL
Conjugation	Unconjugated
Purification	The antibody was affinity-purified from rabbit antiserum by affinity-chromatography using epitope-specific immunogen.
Dilution Range	IHC 1:100-1:300 ELISA 1:40000 IF 1:50-200
Formulation	Liquid in PBS containing 50% Glycerol, 0.5% BSA and 0.02% Sodium Azide.
Isotype	IgG
Storage Instruction	Store at -20°C for up to 1 year from the date of receipt, and avoid repeat freeze-thaw cycles.

TARGET INFORMATION

Gene ID	114818
Gene Symbol	KLHL29
Uniprot ID	KLH29_HUMAN
Immunogen	The antiserum was produced against synthesized peptide derived from the human KLHL29 at the amino acid range 261-310
Immunogen Region	261-310 aa
Specificity	KLHL29 Polyclonal Antibody detects endogenous levels of KLHL29 protein.
Immunogen Sequence	



Immunohistochemistry analysis of paraffin-embedded human brain tissue, using KLHL29 Antibody. The picture on the right is blocked with the synthesized peptide.