

Anti-CDKL2 antibody (211-260 aa) (STJ93847)

STJ93847

GENERAL INFORMATION

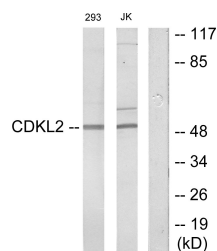
Product Type	Primary antibodies
Short Description	Rabbit polyclonal antibody anti-Cyclin-dependent kinase-like 2 (211-260 aa) is suitable for use in Western Blot, Immunohistochemistry, Immunofluorescence and ELISA research applications.
Applications	WB/IHC/IF/ELISA
Host/Source	Rabbit
Reactivity	Human/Rat/Mouse

PRODUCT PROPERTIES

Clonality	Polyclonal
Clone ID	
Concentration	1 mg/mL
Conjugation	Unconjugated
Purification	The antibody was affinity-purified from rabbit antiserum by affinity-chromatography using epitope-specific immunogen.
Dilution Range	WB 1:500-1:2000 IHC 1:100-1:300 ELISA 1:10000 IF 1:50-200
Formulation	Liquid in PBS containing 50% Glycerol, 0.5% BSA and 0.02% Sodium Azide.
Isotype	IgG
Storage Instruction	Store at -20°C for up to 1 year from the date of receipt, and avoid repeat freeze-thaw cycles.

TARGET INFORMATION

Gene ID	8999
Gene Symbol	CDKL2
Uniprot ID	CDKL2_HUMAN
Immunogen	The antiserum was produced against synthesized peptide derived from the human CDKL2 at the amino acid range 211-260
Immunogen	211-260 aa
Region	
Specificity	KKIAMRE Polyclonal Antibody detects endogenous levels of KKIAMRE protein.
Immunogen Sequence	



Western blot analysis of lysates from Jurkat and 293 cells, using CDKL2 Antibody. The lane on the right is blocked with the synthesized peptide.