

Anti-KCNJ5 antibody (370-419 aa) (STJ93842)

STJ93842

GENERAL INFORMATION

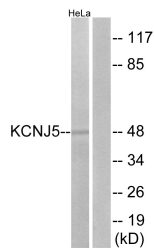
Product Type	Primary antibodies
Short Description	Rabbit polyclonal antibody anti-G protein-activated inward rectifier potassium channel 4 channel Kir3.4 (370-419 aa) is suitable for use in Western Blot and Immunohistochemistry research applications.
Applications	WB/IHC
Host/Source	Rabbit
Reactivity	Human/Rat/Mouse

PRODUCT PROPERTIES

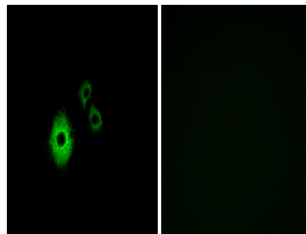
Clonality	Polyclonal
Clone ID	
Concentration	1 mg/mL
Conjugation	Unconjugated
Purification	The antibody was affinity-purified from rabbit antiserum by affinity-chromatography using epitope-specific immunogen.
Dilution	WB 1:500-2000
Range	IHC-P 1:50-300
Formulation	Liquid in PBS containing 50% Glycerol, 0.5% BSA and 0.02% Sodium Azide.
Isotype	IgG
Storage	Store at -20°C for up to 1 year from the date of receipt, and avoid repeat freeze-thaw cycles.
Instruction	

TARGET INFORMATION

Gene ID	3762
Gene Symbol	KCNJ5
Uniprot ID	KCNJ5_HUMAN
Immunogen	The antiserum was produced against synthesized peptide derived from the human KCNJ5 at the amino acid range 370-419
Immunogen Region	370-419 aa
Specificity	KIR3.4 Polyclonal Antibody detects endogenous levels of KIR3.4 protein.
Immunogen Sequence	



Western blot analysis of lysates from HeLa cells, using KCNJ5 Antibody. The lane on the right is blocked with the synthesized peptide.



Immunofluorescence analysis of A549 cells, using KCNJ5 Antibody. The picture on the right is blocked with the synthesized peptide.