

## Anti-KCNJ4 antibody (251-300 aa) (STJ93839)

STJ93839

### GENERAL INFORMATION

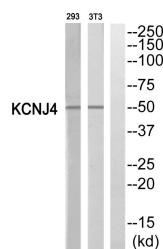
<b>Product Type</b>	Primary antibodies
<b>Short Description</b>	Rabbit polyclonal antibody anti-Inward rectifier potassium channel 4 channel Kir2.3 (251-300 aa) is suitable for use in Western Blot, ELISA and Immunohistochemistry research applications.
<b>Applications</b>	WB/ELISA/IHC
<b>Host/Source</b>	Rabbit
<b>Reactivity</b>	Human/Mouse/Rat

### PRODUCT PROPERTIES

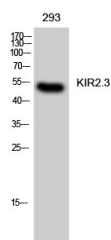
<b>Clonality</b>	Polyclonal
<b>Clone ID</b>	
<b>Concentration</b>	1 mg/mL
<b>Conjugation</b>	Unconjugated
<b>Purification</b>	The antibody was affinity-purified from rabbit antiserum by affinity-chromatography using epitope-specific immunogen.
<b>Dilution Range</b>	WB 1:500-2000 IHC-P 1:50-300 ELISA 2000-20000
<b>Formulation</b>	Liquid in PBS containing 50% Glycerol, 0.5% BSA and 0.02% Sodium Azide.
<b>Isotype</b>	IgG
<b>Storage Instruction</b>	Store at -20°C for up to 1 year from the date of receipt, and avoid repeat freeze-thaw cycles.

### TARGET INFORMATION

<b>Gene ID</b>	3761
<b>Gene Symbol</b>	KCNJ4
<b>Uniprot ID</b>	KCNJ4_HUMAN
<b>Immunogen</b>	The antiserum was produced against synthesized peptide derived from the human KCNJ4 at the amino acid range 251-300
<b>Immunogen Region</b>	251-300 aa
<b>Specificity</b>	KIR2.3 Polyclonal Antibody detects endogenous levels of KIR2.3 protein.
<b>Immunogen Sequence</b>	



Western blot analysis of KCNJ4 Antibody. The lane on the right is blocked with the KCNJ4 peptide.



Western blot analysis of 293 cells using KIR2.3 Polyclonal Antibody

This product is suitable for in-vitro studies under the RESEARCH USE ONLY [RUO] licence. This product must not be used as for diagnostic or other medical purposes.  
St John's Laboratory Ltd, Knowledge Dock Business Centre, University Way, London, E16 2RD | Tel: 0208 223 3081