

Anti-BRI3BP antibody (1-50 aa) (STJ93831)

STJ93831

GENERAL INFORMATION

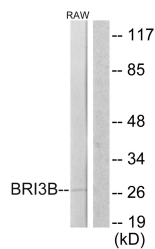
Product Type	Primary antibodies
Short Description	Rabbit polyclonal antibody anti-BRI3-binding protein (1-50 aa) is suitable for use in Western Blot, Immunohistochemistry, Immunofluorescence and ELISA research applications.
Applications	WB/IHC/IF/ELISA
Host/Source	Rabbit
Reactivity	Human/Mouse

PRODUCT PROPERTIES

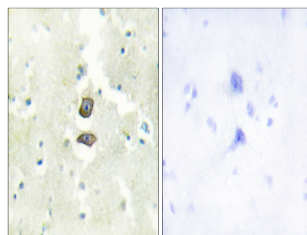
Clonality	Polyclonal
Clone ID	
Concentration	1 mg/mL
Conjugation	Unconjugated
Purification	The antibody was affinity-purified from rabbit antiserum by affinity-chromatography using epitope-specific immunogen.
Dilution Range	WB 1:500-1:2000 IHC 1:100-1:300 IF 1:200-1:1000 ELISA 1:20000
Formulation	Liquid in PBS containing 50% Glycerol, 0.5% BSA and 0.02% Sodium Azide.
Isotype	IgG
Storage Instruction	Store at -20°C for up to 1 year from the date of receipt, and avoid repeat freeze-thaw cycles.

TARGET INFORMATION

Gene ID	140707
Gene Symbol	BRI3BP
Uniprot ID	BRI3B_HUMAN
Immunogen	The antiserum was produced against synthesized peptide derived from the human BRI3B at the amino acid range 1-50
Immunogen Region	1-50 aa
Specificity	KG19 Polyclonal Antibody detects endogenous levels of KG19 protein.
Immunogen Sequence	



Western blot analysis of lysates from RAW264.7 cells, using BRI3B Antibody. The lane on the right is blocked with the synthesized peptide.



Immunohistochemistry analysis of paraffin-embedded human brain tissue, using BRI3B Antibody. The picture on the right is blocked with the synthesized peptide.