

Anti-KCNG2 antibody (321-370 aa) (STJ93819)

STJ93819

GENERAL INFORMATION

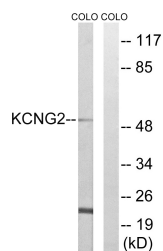
Product Type	Primary antibodies
Short Description	Rabbit polyclonal antibody anti-Potassium voltage-gated channel subfamily G member 2 (321-370 aa) is suitable for use in Western Blot and Immunohistochemistry research applications.
Applications	WB/IHC
Host/Source	Rabbit
Reactivity	Human/Mouse/Rat

PRODUCT PROPERTIES

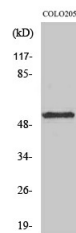
Clonality	Polyclonal
Clone ID	
Concentration	1 mg/mL
Conjugation	Unconjugated
Purification	The antibody was affinity-purified from rabbit antiserum by affinity-chromatography using epitope-specific immunogen.
Dilution Range	WB 1:500-2000 IHC-P 1:50-300
Formulation	Liquid in PBS containing 50% Glycerol, 0.5% BSA and 0.02% Sodium Azide.
Isotype	IgG
Storage	Store at -20°C for up to 1 year from the date of receipt, and avoid repeat freeze-thaw cycles.
Instruction	

TARGET INFORMATION

Gene ID	26251
Gene Symbol	KCNG2
Uniprot ID	KCNG2_HUMAN
Immunogen	The antiserum was produced against synthesized peptide derived from the human KCNG2 at the amino acid range 321-370
Immunogen Region	321-370 aa
Specificity	KCNG2 Polyclonal Antibody detects endogenous levels of KCNG2 protein.
Immunogen Sequence	



Western blot analysis of lysates from COLO cells, using KCNG2 Antibody. The lane on the right is blocked with the synthesized peptide.



Western blot analysis of various cells using KCNG2 Polyclonal Antibody.