

## Anti-ITPR1 antibody (1566-1615 aa) (STJ93746)

STJ93746

### GENERAL INFORMATION

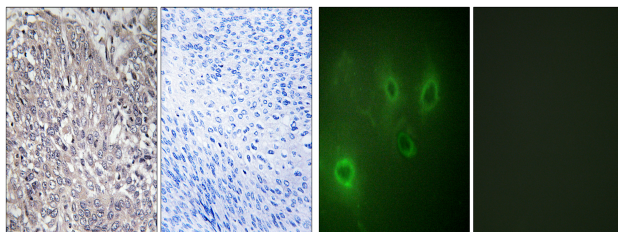
<b>Product Type</b>	Primary antibodies
<b>Short Description</b>	Rabbit polyclonal antibody anti-Inositol 1, 4, 5-trisphosphate receptor type 1 (1566-1615 aa) is suitable for use in Immunohistochemistry, Immunofluorescence and ELISA research applications.
<b>Applications</b>	IHC/IF/ELISA
<b>Host/Source</b>	Rabbit
<b>Reactivity</b>	Human/Mouse/Rat

### PRODUCT PROPERTIES

<b>Clonality</b>	Polyclonal
<b>Clone ID</b>	
<b>Concentration</b>	1 mg/mL
<b>Conjugation</b>	Unconjugated
<b>Purification</b>	The antibody was affinity-purified from rabbit antiserum by affinity-chromatography using epitope-specific immunogen.
<b>Dilution Range</b>	IHC 1:100-1:300 IF 1:200-1:1000 ELISA 1:20000
<b>Formulation</b>	Liquid in PBS containing 50% Glycerol, 0.5% BSA and 0.02% Sodium Azide.
<b>Isotype</b>	IgG
<b>Storage Instruction</b>	Store at -20°C for up to 1 year from the date of receipt, and avoid repeat freeze-thaw cycles.

### TARGET INFORMATION

<b>Gene ID</b>	3708
<b>Gene Symbol</b>	ITPR1
<b>Uniprot ID</b>	ITPR1_HUMAN
<b>Immunogen</b>	The antiserum was produced against synthesized peptide derived from the human InsP3R1 at the amino acid range 1566-1615
<b>Immunogen Region</b>	1566-1615 aa
<b>Specificity</b>	IP3R-I Polyclonal Antibody detects endogenous levels of IP3R-I protein.
<b>Immunogen Sequence</b>	



Immunohistochemistry analysis of paraffin-embedded human cervix carcinoma tissue, using InsP3R1 Antibody. The picture on the right is blocked with the synthesized peptide.

Immunofluorescence analysis of COS7 cells, using InsP3R1 Antibody. The picture on the right is blocked with the synthesized peptide.

This product is suitable for in-vitro studies under the RESEARCH USE ONLY [RUO] licence. This product must not be used as for diagnostic or other medical purposes.  
St John's Laboratory Ltd, Knowledge Dock Business Centre, University Way, London, E16 2RD | Tel: 0208 223 3081