

Anti-CILK1 antibody (125-174 aa) (STJ93740)

STJ93740

GENERAL INFORMATION

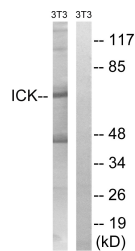
Product Type	Primary antibodies
Short Description	Rabbit polyclonal antibody anti-Serine/threonine-protein kinase ICK (125-174 aa) is suitable for use in Western Blot, Immunohistochemistry, Immunofluorescence and ELISA research applications.
Applications	WB/IHC/IF/ELISA
Host/Source	Rabbit
Reactivity	Human/Mouse/Rat

PRODUCT PROPERTIES

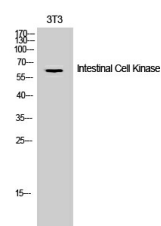
Clonality	Polyclonal
Clone ID	
Concentration	1 mg/mL
Conjugation	Unconjugated
Purification	The antibody was affinity-purified from rabbit antiserum by affinity-chromatography using epitope-specific immunogen.
Dilution Range	WB 1:500-1:2000 IHC 1:100-1:300 ELISA 1:20000 IF 1:50-200
Formulation	Liquid in PBS containing 50% Glycerol, 0.5% BSA and 0.02% Sodium Azide.
Isotype	IgG
Storage Instruction	Store at -20°C for up to 1 year from the date of receipt, and avoid repeat freeze-thaw cycles.

TARGET INFORMATION

Gene ID	22858
Gene Symbol	CILK1
Uniprot ID	CILK1_HUMAN
Immunogen	The antiserum was produced against synthesized peptide derived from the human ICK at the amino acid range 125-174
Immunogen Region	125-174 aa
Specificity	Intestinal Cell Kinase Polyclonal Antibody detects endogenous levels of Intestinal Cell Kinase protein.
Immunogen Sequence	



Western blot analysis of lysates from NIH/3T3 cells, treated with PBS 10μM 60', using ICK Antibody. The lane on the right is blocked with the synthesized peptide.



Western blot analysis of 3T3 cells using Intestinal Cell Kinase Polyclonal Antibody